



# A Day in the Life

Haverhill Public Schools Nursing

**Nancy Thompson, BSN, RN, NCSN Director of Health and Nursing Services**

**Katrina Sullivan, BSN, RN, NCSN Pentucket Lake School Nurse**

**Jenna Reilly, BSN, RN, NCSN Consentino Middle School Nurse**

**Talia Graham, BSN, RN, NCSN District Resource Nurse**

## Health Services 24-25

- Director of Health and Nursing Services
- Principal Clerk .5 FTE
- 23 RNs (19 full time, 4 part time - two job shares Tilton and Walnut Square)
- All RNs Bachelors level education or higher
- 22 RNs DESE certified
- 11 RNs NSCN certified (3 more testing this summer)
- 5 LPNs
- 7 Health Assistants (CNA, MA, LNA)
- Family Engagement Specialist
- 11 Nurses dually licensed in NH
- Nursing students from UNH and Northeastern University

## Overview of Some Significant Conditions and Diagnoses

119 Life Threatening Allergies

20 Sickle Cell

7 Cancer

126 Cardiac Condition

41 Diabetes (34 Type I, 7 Type II)

6 Cystic Fibrosis

106 Seizure Disorder

1082 Asthma

3 Tracheostomy

13 Feeding Tube

1066 ADHD/ADD

807 Anxiety

520 Autism Spectrum Disorder

298 Depression

37 Eating Disorder

## Interesting Nursing Statistics (as of 6/9/25)

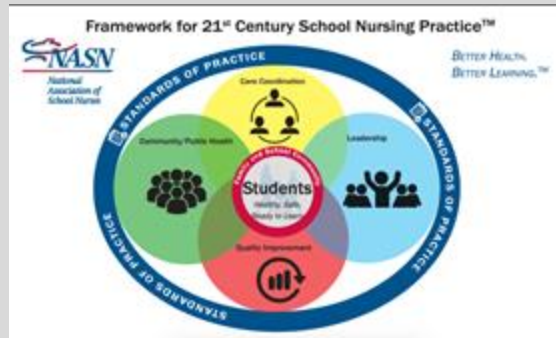
- **107,064** student visits
  - **702** staff visits
  - **35,664** procedures performed
  - **8,499** medications administered
  - **11,800** screenings performed (vision, hearing, BMI, postural)
  - **244** field trips, extracurricular activities and events covered
- \*does not include night school or recurrent events like middle school sports or weekly MSP trips

# A Day in the Life

Of an Elementary School Nurse  
Pentucket Lake

# What do we do to keep kids healthy?

- Care planning for students with chronic health conditions
- Take care of ill and injured students
- Ensure students have updated physicals, immunizations, lead screenings and medication orders
- Hearing, vision, BMI and postural screenings
- Maintain health conditions and allergies care plans and medications
- Collaborate with school staff about student health as needed



# Sub Separate Programs

- We work with the sub-separate classrooms closely
- Students are provided with an opportunity to explore our tools to increase confidence and understanding of the tools we use
- We honor the student's words and celebrate when they request us in their own way independently!





# Kids put things in the darndest places

- Fingers stuck in the holes of xylophones where the sticks are stored
- A finger stuck in the end of a wooden train track piece
- A finger stuck in the screw hole behind the leg support of a kidney table
- Erasers stuck in ears
- Beads stuck in the nose and ears
- Counting bears stuck in the nose



# Who Lost a Tooth at Pentucket Lake



# Emergencies in the Health Office

- Anaphylaxis
- Loss of consciousness
- Low blood sugar
- Accidental ingestion
- Chest pain
- Seizures
- Lacerations
- Fractures



# Day in the life of a Middle School Nurse

Consentino

# Monday 6/2/25

- 8:45am - Re entry meeting for a student admitted to the hospital for behavioral concerns returning to school
- 4 new medications needed to be given at school - enter each order, scan orders
- 9:00 - Parent in for medication drop off
- 9:30am - Parent in for medication drop off
- 9:40 am - student in sickle cell crisis needing 911 to be contacted
  - Hold in place
  - Report given to responders
  - Document incident and update 911 protocol sheet
  - Follow up on students status
- 12:00 - student in with self injurious behavior
  - Coordinate with school counselor
  - Provide support to the student
- 1:00 pm - head injury leading to concussion
  - Email to teachers
  - Scan in paperwork
  - Document accommodations

- Total visits on this day 60
- 31 Daily medications/treatments administered
- Call from Washington DC nurse for med clarification/concerns.
- Staff in with headaches
- Mx MD notes entered and scanned into each student chart.
- Preparation of medical concerns lists to be sent to Whittier Tech and HHS.

# Consentino

Total of 809 students

## Chronic Health Conditions:

- 1 Diabetic
- 1 student with CF
- 1 student with Sickle Cell
- 1 student with Pulmonary Hypertension requiring continuous O2 and needing battery changes frequently throughout the day
- 1 Failure to thrive student requiring daily monitoring of bladder/bowel and nutritional intake.
- Eating disorders
  - Bulimia - orthostatics weekly, fax to MD
  - ARFID (avoidant/restrictive food intake disorder)
- 12 seizure students (hx of and current)
- 40 students with life threatening allergies
- 126 students with asthma

**Daily Medications:** 32 daily medications/treatments

**Average amount of students seen: 50-70 daily**

Never thought you would see this:

- Lip sucking challenge
- Nose Piercings in the bathroom at school
- Stapled fingers
- Telling your staff to use an electric razor
- Kids glue gunning one another
- Telling a student to chew tums not swallow
- Puberty questions



# Day in the life of High School Nurse

Haverhill High School

# Monday February 3rd 2025

- 758 am: Student reports feeling hot. Fever of 103 F. Call home using Spanish interpreter. No answer. Treat student with acetaminophen and have rest in sick bay. Return call at 1030 with instructions for student to walk to grandmother's who lives a block away. Spanish interpreter contacted to call grandmother with instructions to call school upon students arrival.
- 801 am: Student who fell on ice outside. Assess and ice applied to injury
- 819 am: Student with cold symptoms. Assess vitals/ symptom. Return to class.
- 830 am: Student vomiting. Call to home. Student D/C'd to parents.
- 855 am: Student with sore throat. Vitals/ Assess. Salt water gargle and return to class
- 931 am: Student with abrasion. Cleanse/ bandage and return to class
- 938 am: Lock down called d/t alteration. Nurses x 3 called to seen. Hold in place with 4 Students in nurse's office.
- 943 am: Student with sore throat. Vitals/ assess/ salt water gargle/ acetaminophen for pain. Rest until hold in place released
- 949 am: Student fall. Assess/ ice and hold in place until hold in place released.
- 951 am: Student with headache. Vitals and acetaminophen for pain. Rest until hold in place released.
- 1020 am: Hold in place released. 3 students returned to class.
- 1024 am: Student with nausea. Vitals/ assess. Guardian called and student d/c'd to guardian.
- 1117 am: Student with headache. Vitals/ assess/ and acetaminophen for pain. Return to class.
- 1125am: Medical note scanned and uploaded to student chart
- 1127 am: Student with headache. Vitals/ assess/ and acetaminophen for pain.
- 1131 am: Medical note scanned and uploaded to student chart.
- 1132 am: Student with headache. Vitals/ assess/ and acetaminophen for pain. Return to class.
- 1132 - 12 pm: Management of 3 diabetic student's. BG/ Carb coverage/ BG correction and verification of insulin administration.
- 1211 pm: Treatment of student with bloody nose and dizziness. Return to class.
- 1221 pm; Medical note scanned and uploaded to student chart.
- 1246 pm: Student with menstrual cramps. Medication administration for pain and return to class
- 1311 pm: Student with headache. Vitals/ assess/ and acetaminophen for pain. Return to class.
- 1313 pm: Student with headache. Vitals/ assess/ and acetaminophen for pain. Return to class.
- 1336 pm: Student with bloody nose. Treat and then return to class



## **On this day the 3 other nurses:**

- Had 39 other nurse office visits
- Responded to altercation and treated staff as well as 12 students assessing all for potential head injuries and/ or need for further medical need then called guardians of the students they were concerned on to establish a plan of care
- Performed GT feed
- Performed Chest PT
- Cared for 3 other diabetic students
- Administer 16 medications

# All Schools

- Epi pens and inhalers
  - Obtain orders
  - Monitor expiration dates
  - Contact families for parent consents and MD orders
- Substance abuse evaluations
- Student altercations
- Complete incident reports
- Contact parents
- Mental health concerns requiring support and care from nursing, often needing to pull in guidance counselors, student adjust counselors, administration, family and sometimes urgent need for SRO/EMS support if the student is in a crisis.
- Staff concerns
- Screenings
  - Scoliosis - Required for all 5th, 6th, 7th and 8th grader
  - Hearing and vision - Required for every 5th grader
  - Hearing, vision, height, weight - Required for every 7th Grader.
- 504 Meetings
- IEP Meetings
- Re Entry Meetings
- Building Crisis meetings
- Attendance Meetings
- Ordering supplies
- Prepping emergency bags
- Preparing for events/field trips

## Biggest Challenges

- Obtaining medically necessary medications/paperwork from parents and doctors
- Field trips/Extracurricular activities
- Communication
- DCF

