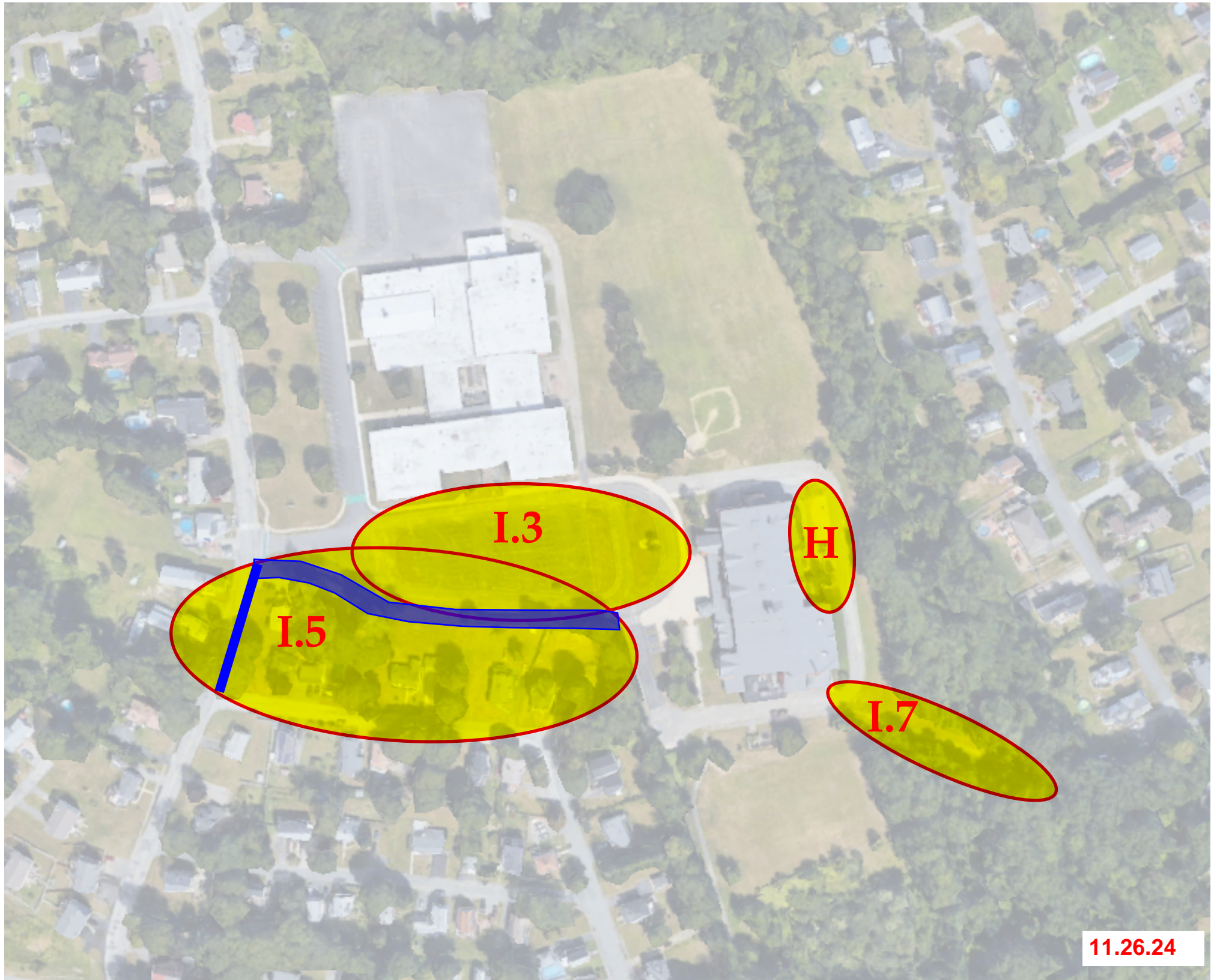


### Suggested Addenda

Line Item		Description	Priority	ROM Cost*
A	A.1 - Additional Card Readers - Construction Costs	Owner requested for additional doors to have electrified card readers added to the project. Door frames will need to be adjusted to accommodate this change. Additional electrical panels, cables, and wiring to be added.	1	\$300,000
	A.2 - Additional Card Readers - Designer Services	Designer services related to line item above.	1	\$0
B	B.1 - Consentino Playground - Construction Cost	Owner requested additional play equipment which would modify the layout of the poured-in-place surface and potential drainage changes.	1	\$136,706.69
	B.2 - Consentino Playground - Designer Services	Designer services related to line item above.	1	\$25,000
C	Extended Schedule Time - Designer	At the time DW Amd #01 was issued (11/22) and executed (03/23), Mods 6-8 totalled 46.5 months, (DW carried 45.5 months). Currently mods 6-8 are 64.5 months. This is extending the Design Duration by 19 months (3 months design, 11 months CA & 5 months construction)	1	\$110,000
D	Extended Schedule Time - OPM	At the time CPL Amd #01 was issued (11/22) and executed (01/23), Mods 6-8 totalled 46.5 months. Currently Mods 6-8 are 64.5 months. This is extending the OPM duration by 18 months. (2 months design & 16 months construction)	1	\$600,000
E	E.1 - Addition of Canopy at Parent Pick-up - Construction Cost	Owner requested add to provide 50' x 17' canopy near the student drop-off / pick-up area west of the basketball court.	2	\$375,000
	E.2 - Addition of Canopy at Parent Pick-up - Designer Services	Designer services related to line item above. *Additional meeting required to review design and scope of the structure.	2	\$50,000
F	F.1 - Additional Video Surveillance Camera - Construction Costs	Owner requested add during 10.17.24 FFE Mtg to add (1) video surveillance cameras for student support coordinator space.	3	\$2,500
	F.2 - Additional Video Surveillance Camera - Designer Services	Designer services related to line item above.	3	\$1,500
G	G.1 - Enhancements to Learning Courtyard - Construction Costs	Enhancements to the learning courtyard - Scope includes additional speakers, reviewing gate location for community space for after hour-use. Additional video screen.	4	\$100,000
	G.2 - Enhancements to Learning Courtyard - Designer Services	Designer services related to line item above. *Additional meeting required to review design.	4	\$15,000
H	H.1 - Renovation of existing Silver Hill Playground - Construction Cost	Owner requested to renovate the existing playground behind Silver Hill. (Potential stormwater management / play area / play surface / play equipment / hardscape)	4	\$250,000
	H.2 - Renovation of existing Silver Hill Playground - Designer Services	Designer services related to line item above. *Additional meeting required to review design.	4	\$150,000
I	I.1 - Silver Hill Crosswalks Modification - Construction Cost	The City of Haverhill requested that the project relocate/revise the sidewalks/crosswalks locations. Revise crosswalks/curb cuts on the west side of Washington St and Silver Hill Entrance. Revise sidewalk layout and curb cut locations.	5	\$100,000
	I.2 - Silver Hill Crosswalks Modification - Designer Services	Designer services related to line item above. *Additional meeting required to review design.	5	\$30,000
	I.3 - Silver Hill Parking Lot - Construction Cost	Reconstruction of the parking lot. New survey. Re-pave / re-stripe existing parking lot in front of Silver Hill. Potential drainage changes. Potential additional signage. Potential Phasing Concerns will need to be addressed.	5	\$400,000
	I.4 - Silver Hill Parking Lot - Designer Services	Designer services related to line item above. *Additional meeting required to review design.	5	\$70,000
	I.5 - Silver Hill Sidewalk Extension - Construction Costs	Extension of sidewalk on the south side to Silver Hill parking lot. New sidewalk to extend to Washington Street and connect to the crosswalk noted above.	5	\$50,000
	I.6 - Silver Hill Sidewalk Extension - Designer Services	Designer services related to line item above. *Additional meeting required to review design.	5	\$15,000
	I.7 - Silver Hill Site Improvements - Construction Costs & Designer Services Combined	Improvements to the Silver Hill Path. (Intersection of Silver St. and Davis St.) Addition of lighting / security camera / tree removal. *Additional meeting required to review design.	5	\$100,000
Contingency for Line Items Above		10% of the Costs Above		\$288,071
Potential Risk Log		PCO Log and Awaiting Final Contracts for Parking Lot Work		\$735,000
<b>Subtotal</b>				<b>\$3,903,777</b>

\*ROM = Rough Order of Magnitude

Construction Contingency (Initial Value - Hard Costs)	\$6,242,900
Owner Contingency (Initial Value - Soft Costs)	\$4,456,200
Subtotal of Contingency (Hard & Soft Costs Combined)	\$10,699,100
Bid Savings (District Share per MSBA updated 3011)	\$2,269,420
Total Contingency (Starting Value)	\$12,968,520
Contingency spent to date (Authorized Changes)	(\$727,013)
<b>Total Contingency (Current Balance)</b>	<b>\$12,241,507</b>









ITEM A - Additional Card Readers



Owned by Contract

Proposed Item A in Suggested Addenda





Owned by Contract

Proposed Item A in Suggested Addenda





- Owned by Contract
- Proposed Item A in Suggested Addenda





Owned by Contract

Proposed Item A in Suggested Addenda