

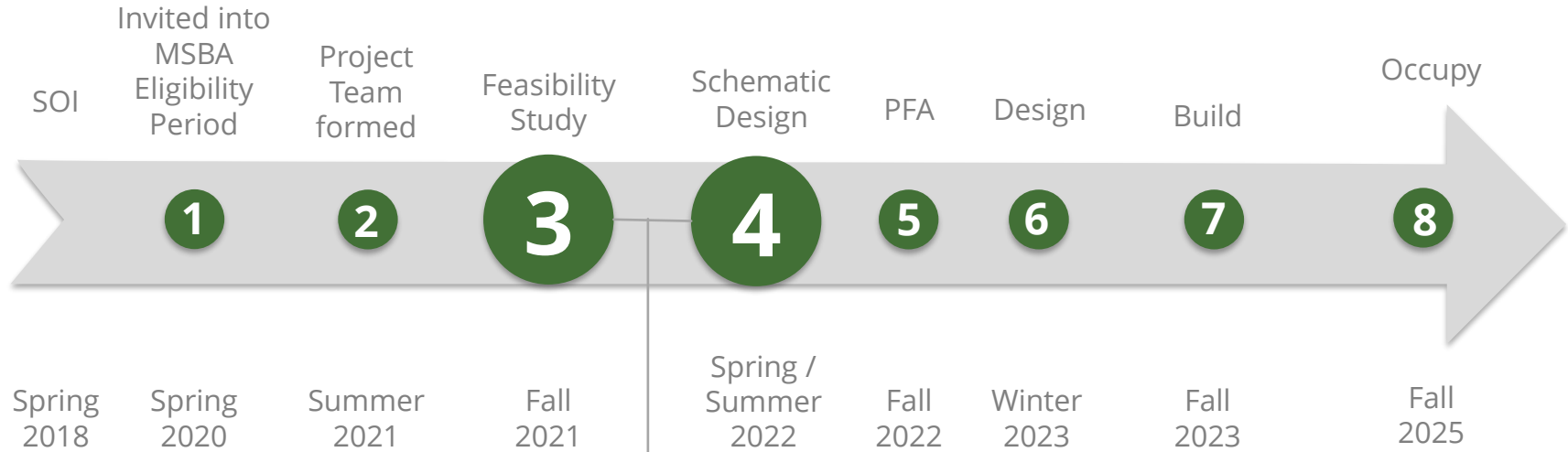
Haverhill Public Schools
Consentino Middle School

Public Meeting #1

12/08/2021



MSBA PROCESS



- Existing Facility Assessment
- **Define Educational Program**
- **Define Space Requirements**
- Explore Many Options
- Explore Cost Estimates
- Narrow to Few Options
- Select Preferred Options
- Set Project Budget

MSBA PROCESS

3

SEPT
2021

FEASIBILITY STUDY

APRIL
2022

PLANNING

Public Visioning Sessions
Educational Program
Enrollment Exploration
Space Summaries

Existing Conditions Review

Develop Full Range of Options

Public Information Sessions

Select Preferred Option

4

SCHEMATIC DESIGN

OCTOBER
2022

DESIGN

Initiate Schematic Design

Develop Cost Estimates

Submit to MSBA for Approval

Public Presentations
Preferred Option & Cost

City's Funding Votes
Fall 2022

Visioning Session #1



September 16th, 2021



- Existing Conditions Review
- Visioning Sessions (3)
- Faculty and Staff Visioning
- User Meetings
- Working Group Meetings
- School Building Committee
- School Tours

MSBA PROCESS

3

SEPT
2021

FEASIBILITY STUDY

APRIL
2022

PLANNING

Public Visioning Sessions
Educational Program
Enrollment Exploration
Space Summaries

Existing Conditions Review

Develop Full Range of Options

Public Information Sessions

Select Preferred Option

4

SCHEMATIC DESIGN

OCTOBER
2022

DESIGN

Initiate Schematic Design

Develop Cost Estimates

Submit to MSBA for Approval

Public Presentations
Preferred Option & Cost

City's Funding Votes
Fall 2022



715

5TH-8TH
Current
Configuration

985

5TH-8TH
Tilton Upper
Remains in
Service

1,080

5TH-8TH
w/o Tilton Upper
in Service



715

5TH-8TH
Current
Configuration

158K SF

985

5TH-8TH
Tilton Upper
Remains in
Service

210K SF

1,080

5TH-8TH
w/o Tilton Upper
in Service

225K SF

PDP Design Options

PDP Design Options

715

- RO.715 Repair Only

- R.715 Renovation

Addition/Renovation

- AR.715.A

- AR.715.C

New Construction

- N.715.A

- N.715.B

- N.715.C

985

- AR.985.A

- AR.985.B

- AR.985.C

- N.985.A

- N.985.B

- N.985.C

1,080

- AR.1080.A

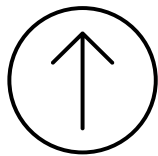
- AR.1080.B

- AR.1080.C

- N.1080.A

- N.1080.B

- N.1080.C





715

5TH-8TH
Current
Configuration

Dr. Albert B. Consentino Middle School



12.08.21 Preliminary Design Program

OPTION R.715-A

Overview

Option R.715-A represents the same scope of work as option R.715-A plus a more comprehensive interior reorganizing and resizing of space to better embody the District's desired spaces and spatial relationships.

Educational Program

- All instructional spaces for this enrollment are present
- Most instructional spaces are under the MSBA guidelines
- A renovation only cannot accommodate all the desired spaces

Site / Traffic

- Improved separation between parent vehicles and buses
- Increased parent queue length
- Increased parking and separation of parking from Silver Hill
- Green space remains similar to existing

Community

- Gym remains larger than MSBA guidelines
- Improved event entry
- No dedicated space for community programs

Logistics / Construction Impact

- Many phases
- Temporary conversion of gymnasium to classrooms during construction
- Limited use of gym and cafeteria during construction



SITE CIRCULATION

- Bus Drop Off
- Parent Drop Off
- Service Entry
- Entry
- New Construction
- Renovation

PROGRAMMING LEGEND

- Administration & Guidance
- Arts & Music
- Core Academic
- Dining & Food Service
- Health & Physical Education
- Media Center
- Medical
- Special Education
- Vocations & Technology
- Custodial & Maintenance



SECOND FLOOR PLAN



FIRST FLOOR PLAN

Dr. Albert B. Consentino Middle School



12.08.21 Preliminary Design Program



SITE CIRCULATION

- Bus Drop Off
- Parent Drop Off
- Service Entry
- Entry
- New Construction
- Renovation

PROGRAMMING LEGEND

- Administration & Guidance
- Arts & Music
- Core Academic
- Dining & Food Service
- Health & Physical Education
- Media Center
- Medical
- Special Education
- Vocations & Technology
- Custodial & Maintenance

OPTION AR.715-A

Overview

Option AR.715-A represents renovations to the existing building that keeps most of the existing building and places a two-story classroom addition to the east, a new custodial area to the north, and a new administration and entry to the west.

Educational Program

- Most desired spaces and some adjacencies are achieved
- Grade level teams are mostly expressed
- Teams for each grade level are spread over two floors and/or in different parts of the building

Site / Traffic

- Improved separation between parent vehicles and buses
- Increased parent queue length
- Increased parking and separation of parking from Silver Hill
- Green space is expressed as less usable shape for youth sports

Community

- Gym is larger than MSBA guidelines
- Clear separation of public and private areas
- Dedicated space for community programs

Logistics / Construction Impact

- Many phases
- More impact to students during construction
- New addition used as swing space
- Limited use of gymnasium and cafeteria during construction



SECOND FLOOR PLAN



FIRST FLOOR PLAN

Dr. Albert B. Consentino Middle School



12.08.21 Preliminary Design Program



OPTIONAR.715-C

Overview

Option AR.715-C represents renovations to the existing public areas of the existing building and a four-story classroom addition to the east, and a new administration and entry to the west.

Educational Program

- All desired spaces and most adjacencies are achieved
- Grade level teams are clearly expressed
- Teams for each grade level are on the same floor but in different wings

Site / Traffic

- Improved separation between parent vehicles and buses
- Increased parent queue length
- Increased parking and separation of parking from Silver Hill
- Green space is expressed as more usable shape for youth sports

Community

- Gym is larger than MSBA guidelines
- Clear separation of public and private areas
- Dedicated space for community programs

Logistics / Construction Impact

- Several phases
- More impact to students during construction than all new, but less than AR.715-A
- New addition used as swing space
- Limited use of gymnasium and cafeteria during construction



SITE CIRCULATION

- Bus Drop Off
- Parent Drop Off
- Service Entry
- Entry
- New Construction
- Renovation

PROGRAMMING LEGEND

- Administration & Guidance
- Arts & Music
- Core Academic
- Dining & Food Service
- Health & Physical Education
- Media Center
- Medical
- Special Education
- Vocations & Technology
- Custodial & Maintenance



FOURTH FLOOR PLAN



THIRD FLOOR PLAN



SECOND FLOOR PLAN



FIRST FLOOR PLAN

Dr. Albert B. Consentino Middle School



12.08.21 Preliminary Design Program



OPTION N.715-A

Overview

Option N.715-A represents all new construction on the existing fields expressed as a simple three-story bar.

Educational Program

- All desired spaces and adjacencies are achieved
- Grade level teams are clearly expressed
- Teams for each grade level are located on the same floor

Site / Traffic

- Improved separation between parent vehicles and buses
- Increased parent queue length
- Increased parking and separation of parking from Silver Hill
- Green space is expressed as more usable shape

Community

- Gym aligns with MSBA guidelines
- Clear separation of public and private areas
- Dedicated space for community programs

Logistics / Construction Impact

- Two major phases
- Limited impact to students during construction

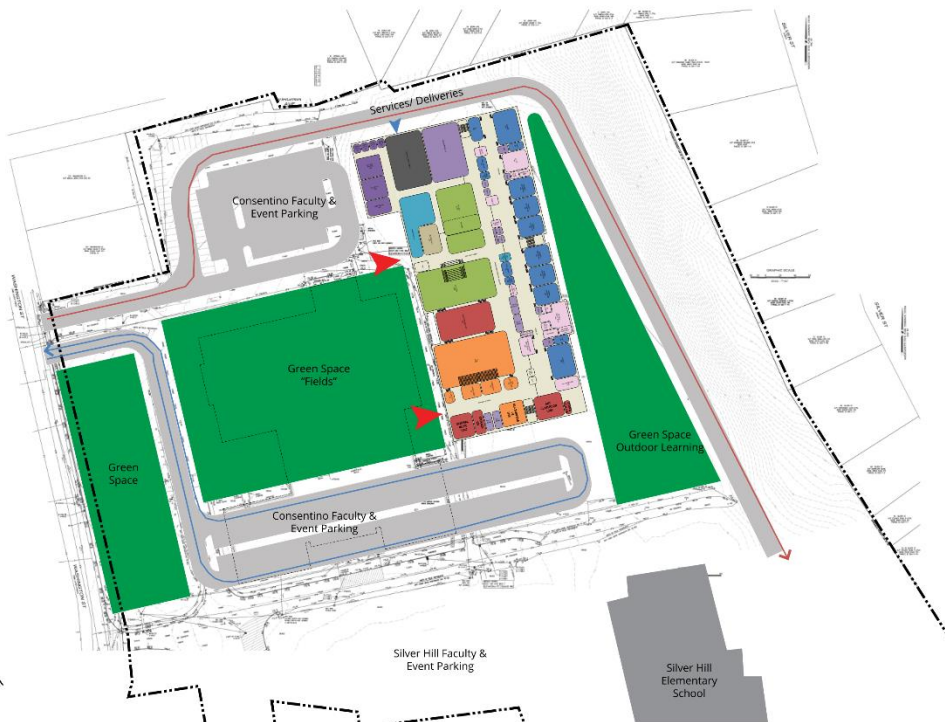


SITE CIRCULATION

- Bus Drop Off
- Parent Drop Off
- Service Entry
- Entry
- New Construction
- Renovation

PROGRAMMING LEGEND

- Administration & Guidance
- Arts & Music
- Core Academic
- Dining & Food Service
- Health & Physical Education
- Media Center
- Medical
- Special Education
- Vocations & Technology
- Custodial & Maintenance



THIRD FLOOR PLAN



SECOND FLOOR PLAN



FIRST FLOOR PLAN

Dr. Albert B. Consentino Middle School



12.08.21 Preliminary Design Program



OPTION N.715-B

Overview

Option N.715-B represents all new construction on the existing fields expressed as two, three-story wings.

Educational Program

- All desired spaces and most adjacencies are achieved
- Grade level teams are clearly expressed
- Teams for each grade level are spread over two floors

Site / Traffic

- Improved separation between parent vehicles and buses
- Increased parent queue length
- Increased parking and separation of parking from Silver Hill
- Green space is expressed as more usable shape

Community

- Gym aligns with MSBA guidelines
- Clear separation of public and private areas
- Dedicated space for community programs

Logistics / Construction Impact

- Two major phases
- Limited impact to students during construction

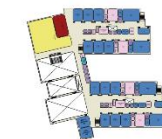


SITE CIRCULATION

- Bus Drop Off
- Parent Drop Off
- Service Entry
- Entry
- New Construction
- Renovation

PROGRAMMING LEGEND

- Administration & Guidance
- Arts & Music
- Core Academic
- Dining & Food Service
- Health & Physical Education
- Media Center
- Medical
- Special Education
- Vocations & Technology
- Custodial & Maintenance



SECOND FLOOR PLAN



FIRST FLOOR PLAN

Dr. Albert B. Consentino Middle School



12.08.21 Preliminary Design Program



OPTION N.715-C

Overview

Option N.715-C represents all new construction on the existing fields expressed as a three-story "L".

Educational Program

- All desired spaces and most adjacencies are achieved
- Grade level teams are clearly expressed
- Teams for each grade level are spread over two floors and/or in different parts of the building

Site / Traffic

- Improved separation between parent vehicles and buses
- Increased parent queue length
- Increased parking and separation of parking from Silver Hill
- Green space is expressed as less usable shape for youth sports

Community

- Gym aligns with MSBA guidelines
- Clear separation of public and private areas
- Dedicated space for community programs

Logistics / Construction Impact

- Two major phases
- Limited impact to students during construction

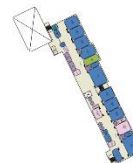


SITE CIRCULATION

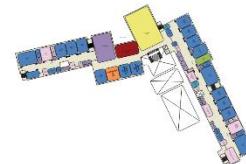
- Bus Drop Off
- Parent Drop Off
- Service Entry
- Entry
- New Construction
- Renovation

PROGRAMMING LEGEND

- Administration & Guidance
- Arts & Music
- Core Academic
- Dining & Food Service
- Health & Physical Education
- Media Center
- Medical
- Special Education
- Vocations & Technology
- Custodial & Maintenance



THIRD FLOOR PLAN



SECOND FLOOR PLAN



FIRST FLOOR PLAN



985

5TH-8TH
Tilton Upper
Remains in
Service

Dr. Albert B. Consentino Middle School



12.08.21 Preliminary Design Program



SITE CIRCULATION

- Bus Drop Off
- Parent Drop Off
- Service Entry
- Entry
- New Construction
- Renovation

PROGRAMMING LEGEND

- Administration & Guidance
- Arts & Music
- Core Academic
- Dining & Food Service
- Health & Physical Education
- Media Center
- Medical
- Special Education
- Vocations & Technology
- Custodial & Maintenance

OPTION AR.985-A

Overview

Option AR.985-A represents renovations to the existing building that keeps most of the existing building and places a two-story classroom addition to the east and a new custodial area to the north.

Educational Program

- Most desired spaces and some adjacencies are achieved
- Grade level teams are mostly expressed
- Teams for each grade level are spread over two floors and/or in different parts of the building

Site / Traffic

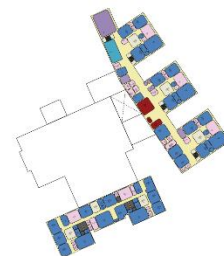
- Limited separation between parent vehicles and buses
- No improvements to parent circulation
- Increased parking and separation of parking from Silver Hill
- Green space is expressed as less usable shape for youth sports

Community

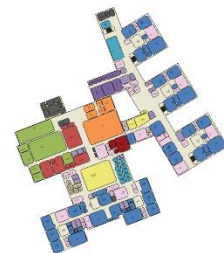
- Gym is larger than MSBA guidelines
- Clear separation of public and private areas
- Dedicated space for community programs

Logistics / Construction Impact

- Many phases
- More impact to students during construction
- New addition used as swing space
- Limited use of gymnasium and cafeteria during construction



SECOND FLOOR PLAN



FIRST FLOOR PLAN

Dr. Albert B. Consentino Middle School



12.08.21 Preliminary Design Program



SITE CIRCULATION

- Bus Drop Off
- Parent Drop Off
- Service Entry
- Entry
- New Construction
- Renovation

PROGRAMMING LEGEND

- | | |
|-----------------------------|-------------------------|
| Administration & Guidance | Media Center |
| Arts & Music | Medical |
| Core Academic | Special Education |
| Dining & Food Service | Vocations & Technology |
| Health & Physical Education | Custodial & Maintenance |

OPTION AR.985-B

Overview

Option AR.985-B represents renovations to the existing building that keeps most of the existing building and places a three-story classroom addition to the east and a new custodial area to the north.

Educational Program

- Most desired spaces and some adjacencies are achieved
- Grade level teams are mostly expressed
- Teams for each grade level are spread over two floors and/or in different parts of the building

Site / Traffic

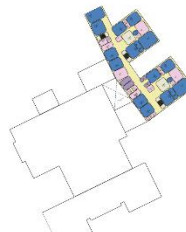
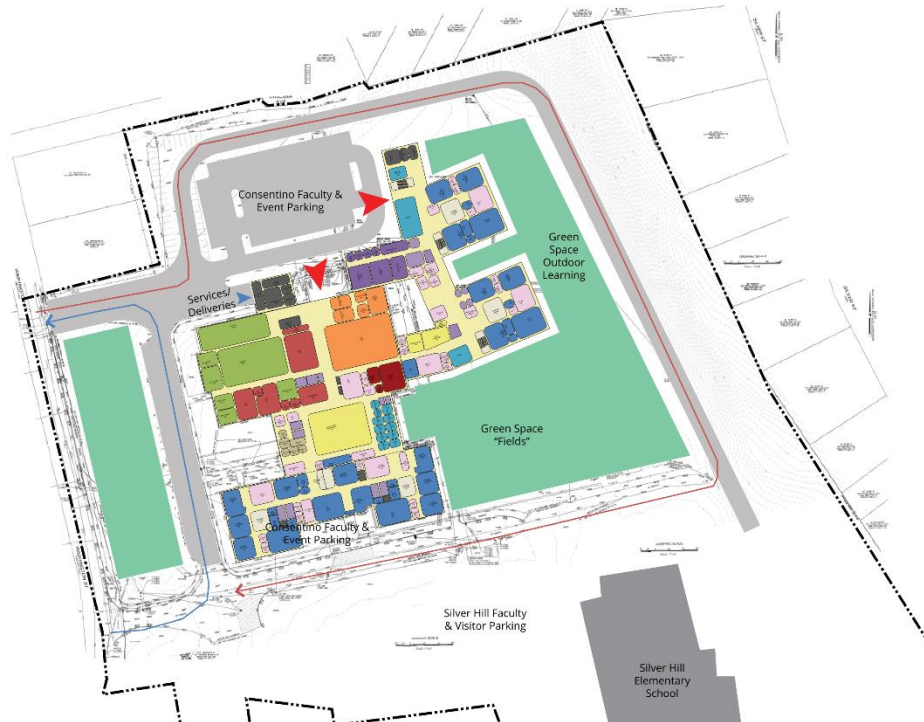
- Limited separation between parent vehicles and buses
- No improvements to parent circulation
- Increased parking and separation of parking from Silver Hill
- Green space is expressed as less usable shape for youth sports

Community

- Gym is larger than MSBA guidelines
- Clear separation of public and private areas
- Dedicated space for community programs

Logistics / Construction Impact

- Many phases
- More impact to students during construction
- New addition used as swing space
- Limited use of gymnasium and cafeteria during construction



THIRD FLOOR PLAN



SECOND FLOOR PLAN



FIRST FLOOR PLAN

Dr. Albert B. Consentino Middle School



12.08.21 Preliminary Design Program

OPTION AR.985-C

Overview

Option AR.985-C represents renovations to the existing public areas of the existing building and a four-story classroom addition to the east and a new administration and entry to the west.

Educational Program

- All desired spaces and most adjacencies are achieved
- Grade level teams are clearly expressed
- Teams for each grade level are on the same floor but in different wings

Site / Traffic

- Improved separation between parent vehicles and buses
- Increased parent queue length
- Increased parking and separation of parking from Silver Hill
- Green space is expressed as more usable shape for youth sports

Community

- Gym is larger than MSBA guidelines
- Clear separation of public and private areas
- Dedicated space for community programs

Logistics / Construction Impact

- Several phases
- More impact to students during construction than all new, but less than AR.715-A
- New addition used as swing space
- Limited use of gymnasium and cafeteria during construction



SITE CIRCULATION

- Bus Drop Off
- Parent Drop Off
- Service Entry
- Entry
- New Construction
- Renovation

PROGRAMMING LEGEND

- Administration & Guidance
- Arts & Music
- Core Academic
- Dining & Food Service
- Health & Physical Education
- Media Center
- Medical
- Special Education
- Vocations & Technology
- Custodial & Maintenance



FOURTH FLOOR PLAN



THIRD FLOOR PLAN



SECOND FLOOR PLAN



FIRST FLOOR PLAN

Dr. Albert B. Consentino Middle School



12.08.21 Preliminary Design Program

OPTION N.985-A

Overview

Option N.985-A represents all new construction on the existing fields expressed as a simple three-story bar.

Educational Program

- All desired spaces and adjacencies are achieved
- Grade level teams are clearly expressed
- Teams for each grade level are located on the same floor

Site / Traffic

- Improved separation between parent vehicles and buses
- Increased parent queue length
- Increased parking and separation of parking from Silver Hill
- Green space is expressed as more usable shape

Community

- Gym aligns with MSBA guidelines
- Clear separation of public and private areas
- Dedicated space for community programs

Logistics / Construction Impact

- Two major phases
- Limited impact to students during construction

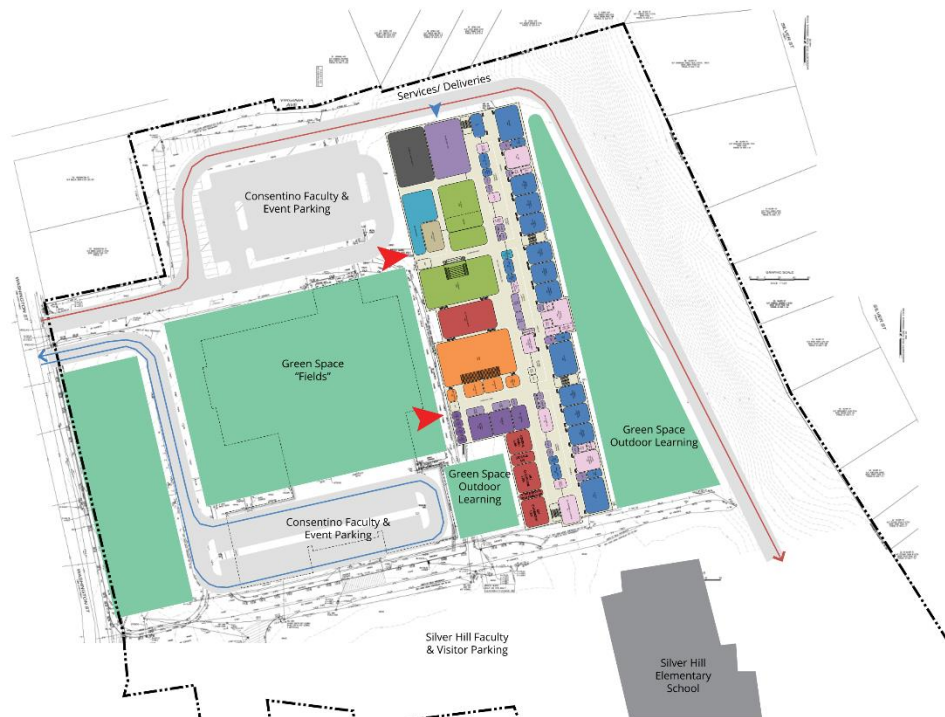


SITE CIRCULATION

- Bus Drop Off
- Parent Drop Off
- Service Entry
- Entry
- New Construction
- Renovation

PROGRAMMING LEGEND

- Administration & Guidance
- Arts & Music
- Core Academic
- Dining & Food Service
- Health & Physical Education
- Media Center
- Medical
- Special Education
- Vocations & Technology
- Custodial & Maintenance



THIRD FLOOR PLAN



SECOND FLOOR PLAN



FIRST FLOOR PLAN

Dr. Albert B. Consentino Middle School



12.08.21 Preliminary Design Program

OPTION N.985-B

Overview

Option N.985-B represents all new construction on the existing fields expressed as two, three-story wings.

Educational Program

- All desired spaces and most adjacencies are achieved
- Grade level teams are clearly expressed
- Teams for each grade level are spread over two floors

Site / Traffic

- Improved separation between parent vehicles and buses
- Increased parent queue length
- Increased parking and separation of parking from Silver Hill
- Green space is expressed as more usable shape

Community

- Gym aligns with MSBA guidelines
- Clear separation of public and private areas
- Dedicated space for community programs

Logistics / Construction Impact

- Two major phases
- Limited impact to students during construction



SITE CIRCULATION

- Bus Drop Off
- Parent Drop Off
- Service Entry
- Entry
- New Construction
- Renovation

PROGRAMMING LEGEND

- Administration & Guidance
- Arts & Music
- Core Academic
- Dining & Food Service
- Health & Physical Education
- Media Center
- Medical
- Special Education
- Vocations & Technology
- Custodial & Maintenance



THIRD FLOOR PLAN



SECOND FLOOR PLAN



FIRST FLOOR PLAN

Dr. Albert B. Consentino Middle School



12.08.21 Preliminary Design Program



OPTION N.985-C

Overview

Option N.985-C represents all new construction on the existing fields expressed as a three-story "L".

Educational Program

- All desired spaces and most adjacencies are achieved
- Grade level teams are clearly expressed
- Teams for each grade level are spread over two floors and/or in different parts of the building

Site / Traffic

- Improved separation between parent vehicles and buses
- Increased parent queue length
- Increased parking and separation of parking from Silver Hill
- Green space is expressed as less usable shape for youth sports

Community

- Gym aligns with MSBA guidelines
- Clear separation of public and private areas
- Dedicated space for community programs

Logistics / Construction Impact

- Two major phases
- Limited impact to students during construction

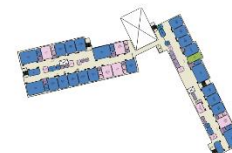


SITE CIRCULATION

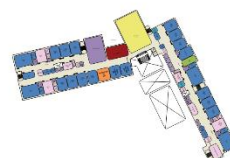
- Bus Drop Off
- Parent Drop Off
- Service Entry
- Entry
- New Construction
- Renovation

PROGRAMMING LEGEND

- Administration & Guidance
- Arts & Music
- Core Academic
- Dining & Food Service
- Health & Physical Education
- Media Center
- Medical
- Special Education
- Vocations & Technology
- Custodial & Maintenance



THIRD FLOOR PLAN



SECOND FLOOR PLAN



FIRST FLOOR PLAN



1,080

5TH-8TH
w/o Tilton Upper
in Service

Dr. Albert B. Consentino Middle School



Colliers

dW
DORE + WHITTIER

12.08.21 Preliminary Design Program

OPTION AR.1080-A

Overview

Option AR.1080-A represents renovations to the existing building that keeps most of the existing building and places a two-story classroom addition to the east and a new custodial area to the north.

Educational Program

- Most desired spaces and some adjacencies are achieved
- Grade level teams are mostly expressed
- Teams for each grade level are spread over two floors and/or in different parts of the building

Site / Traffic

- Limited separation between parent vehicles and buses
- No improvements to parent circulation
- Increased parking and separation of parking from Silver Hill
- Green space is expressed as less usable shape for youth sports

Community

- Gym is larger than MSBA guidelines
- Clear separation of public and private areas
- Dedicated space for community programs

Logistics / Construction Impact

- Many phases
- More impact to students during construction
- New addition used as swing space
- Limited use of gymnasium and cafeteria during construction

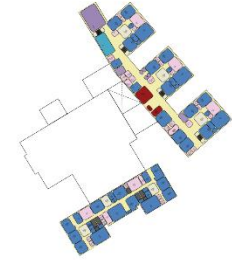
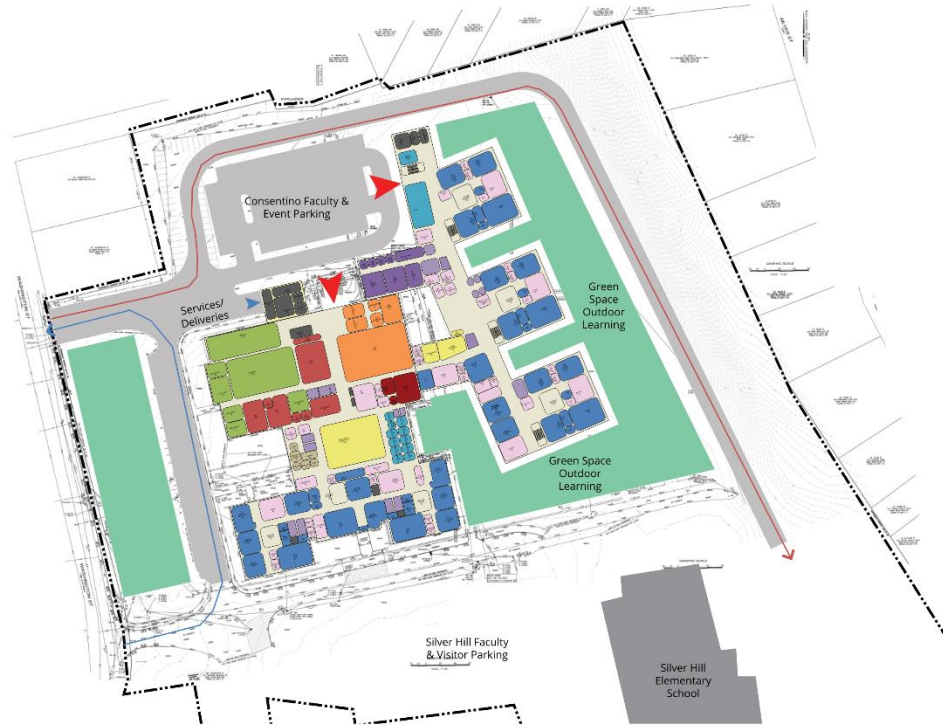


SITE CIRCULATION

- Bus Drop Off
- Parent Drop Off
- Service Entry
- Entry
- New Construction
- Renovation

PROGRAMMING LEGEND

- Administration & Guidance
- Arts & Music
- Core Academic
- Dining & Food Service
- Health & Physical Education
- Media Center
- Medical
- Special Education
- Vocations & Technology
- Custodial & Maintenance



SECOND FLOOR PLAN



FIRST FLOOR PLAN

Dr. Albert B. Consentino Middle School



Colliers

dw
DORE + WHITIER

12.08.21 Preliminary Design Program

OPTION AR.1080-B

Overview

Option AR.1080-B represents renovations to the existing building that keeps most of the existing building and places a three-story classroom addition to the east and a new custodial area to the north.

Educational Program

- Most desired spaces and some adjacencies are achieved
- Grade level teams are mostly expressed
- Teams for each grade level are spread over two floors and/or in different parts of the building

Site / Traffic

- Limited separation between parent vehicles and buses
- No improvements to parent circulation
- Increased parking and separation of parking from Silver Hill
- Green space is expressed as less usable shape for youth sports

Community

- Gym is larger than MSBA guidelines
- Clear separation of public and private areas
- Dedicated space for community programs

Logistics / Construction Impact

- Many phases
- More impact to students during construction
- New addition used as swing space
- Limited use of gymnasium and cafeteria during construction

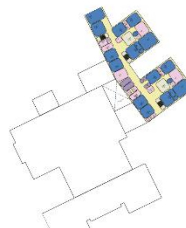


SITE CIRCULATION

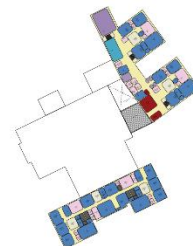
- Bus Drop Off
- Parent Drop Off
- Service Entry
- Entry
- New Construction
- Renovation

PROGRAMMING LEGEND

- Administration & Guidance
- Arts & Music
- Core Academic
- Dining & Food Service
- Health & Physical Education
- Media Center
- Medical
- Special Education
- Vocations & Technology
- Custodial & Maintenance



THIRD FLOOR PLAN



SECOND FLOOR PLAN



FIRST FLOOR PLAN

Dr. Albert B. Consentino Middle School



12.08.21 Preliminary Design Program

OPTION AR.1080-C

Overview

Option AR.1080-C represents renovations to the existing public areas of the existing building and a four-story classroom addition to the east and a new administration and entry to the west.

Educational Program

- All desired spaces and most adjacencies are achieved
- Grade level teams are clearly expressed
- Teams for each grade level are on the same floor but in different wings

Site / Traffic

- Improved separation between parent vehicles and buses
- Increased parent queue length
- Increased parking and separation of parking from Silver Hill
- Green space is expressed as more usable shape for youth sports

Community

- Gym is larger than MSBA guidelines
- Clear separation of public and private areas
- Dedicated space for community programs

Logistics / Construction Impact

- Several phases
- More impact to students during construction than all new, but less than AR.715-A
- New addition used as swing space
- Limited use of gymnasium and cafeteria during construction



SITE CIRCULATION

- Bus Drop Off
- Parent Drop Off
- Service Entry
- Entry
- New Construction
- Renovation

PROGRAMMING LEGEND

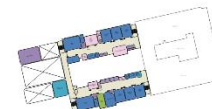
- Administration & Guidance
- Arts & Music
- Core Academic
- Dining & Food Service
- Health & Physical Education
- Media Center
- Medical
- Special Education
- Vocations & Technology
- Custodial & Maintenance



FOURTH FLOOR PLAN



THIRD FLOOR PLAN



SECOND FLOOR PLAN



FIRST FLOOR PLAN



Dr. Albert B. Consentino Middle School



Colliers

dw
DORE + WHITIER

12.08.21 Preliminary Design Program

OPTION N.1080-A

Overview

Option N.1080-A represents all new construction on the existing fields expressed as a simple three-story bar.

Educational Program

- All desired spaces and adjacencies are achieved
- Grade level teams are clearly expressed
- Teams for each grade level are located on the same floor

Site / Traffic

- Improved separation between parent vehicles and buses
- Increased parent queue length
- Increased parking and separation of parking from Silver Hill
- Green space is expressed as more usable shape

Community

- Gym aligns with MSBA guidelines
- Clear separation of public and private areas
- Dedicated space for community programs

Logistics / Construction Impact

- Two major phases
- Limited impact to students during construction

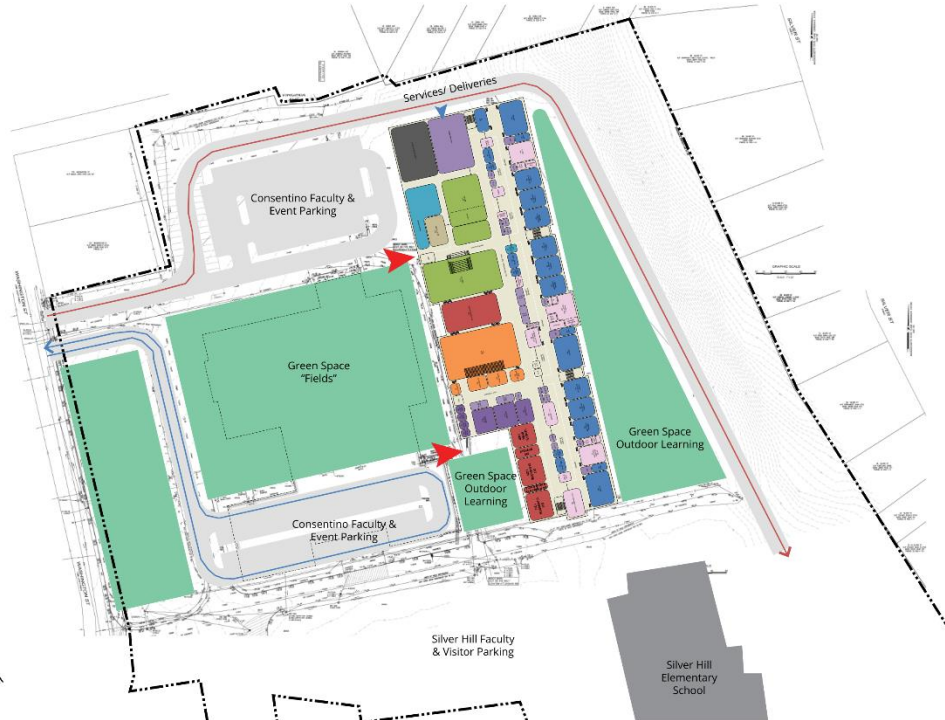


SITE CIRCULATION

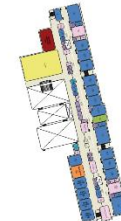
- Bus Drop Off
- Parent Drop Off
- Service Entry
- Entry
- New Construction
- Renovation

PROGRAMMING LEGEND

- Administration & Guidance
- Arts & Music
- Core Academic
- Dining & Food Service
- Health & Physical Education
- Media Center
- Medical
- Special Education
- Vocations & Technology
- Custodial & Maintenance



THIRD FLOOR PLAN



SECOND FLOOR PLAN



FIRST FLOOR PLAN

Dr. Albert B. Consentino Middle School



12.08.21 Preliminary Design Program

OPTION N.1080-B

Overview

Option N.1080-B represents all new construction on the existing fields expressed as two, three-story wings.

Educational Program

- All desired spaces and most adjacencies are achieved
- Grade level teams are clearly expressed
- Teams for each grade level are spread over two floors

Site / Traffic

- Improved separation between parent vehicles and buses
- Increased parent queue length
- Increased parking and separation of parking from Silver Hill
- Green space is expressed as more usable shape

Community

- Gym aligns with MSBA guidelines
- Clear separation of public and private areas
- Dedicated space for community programs

Logistics / Construction Impact

- Two major phases
- Limited impact to students during construction

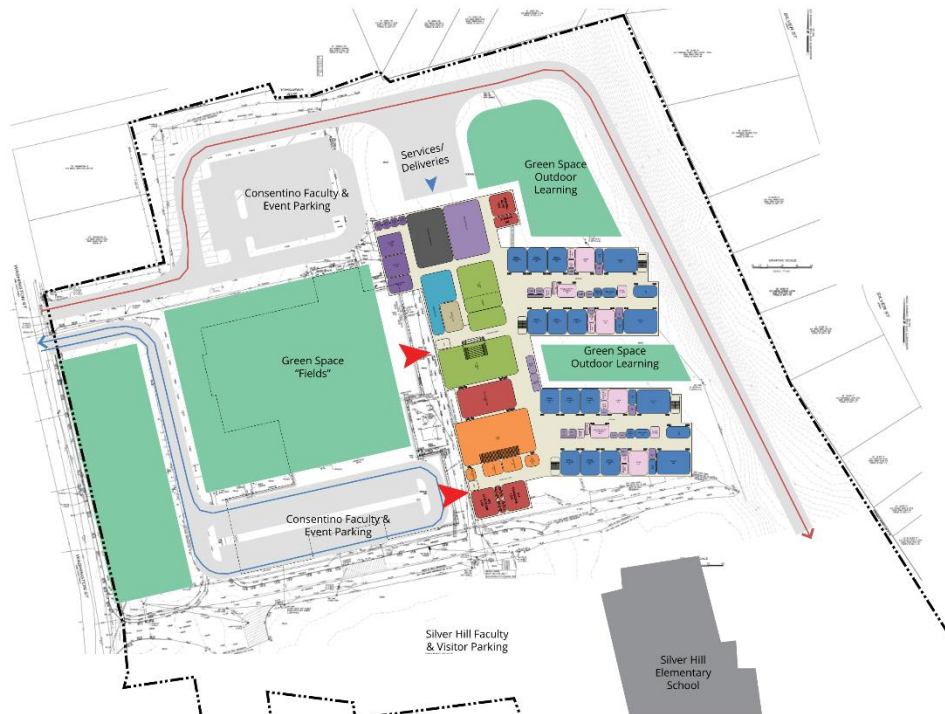


SITE CIRCULATION

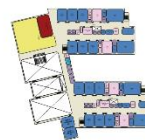
- Bus Drop Off
- Parent Drop Off
- Service Entry
- Entry
- New Construction
- Renovation

PROGRAMMING LEGEND

- Administration & Guidance
- Arts & Music
- Core Academic
- Dining & Food Service
- Health & Physical Education
- Media Center
- Medical
- Special Education
- Vocations & Technology
- Custodial & Maintenance



THIRD FLOOR PLAN



SECOND FLOOR PLAN



FIRST FLOOR PLAN

Dr. Albert B. Consentino Middle School



12.08.21 Preliminary Design Program



OPTION N.1080-C

Overview

Option N.1080-C represents all new construction on the existing fields expressed as a three-story "L".

Educational Program

- All desired spaces and most adjacencies are achieved
- Grade level teams are clearly expressed
- Teams for each grade level are spread over two floors and/or in different parts of the building

Site / Traffic

- Improved separation between parent vehicles and buses
- Increased parent queue length
- Increased parking and separation of parking from Silver Hill
- Green space is expressed as less usable shape for youth sports

Community

- Gym aligns with MSBA guidelines
- Clear separation of public and private areas
- Dedicated space for community programs

Logistics / Construction Impact

- Two major phases
- Limited impact to students during construction



SITE CIRCULATION

- Bus Drop Off
- Parent Drop Off
- Service Entry
- Entry
- New Construction
- Renovation

PROGRAMMING LEGEND

- Administration & Guidance
- Arts & Music
- Core Academic
- Dining & Food Service
- Health & Physical Education
- Media Center
- Medical
- Special Education
- Vocations & Technology
- Custodial & Maintenance



Questions?

Comments?

Comments?

Boards

Comments?

Boards
Mentimeter

Comments?



English

<https://www.menti.com/nn16suvfqi>

Spanish

<https://www.menti.com/ohyxff578f>

Boards Mentimeter

next
steps

MSBA PROCESS

3

SEPT
2021

FEASIBILITY STUDY

APRIL
2022

PLANNING

Public Visioning Sessions
Educational Program
Enrollment Exploration
Space Summaries

Existing Conditions Review

Develop Full Range of Options

Public Information Sessions

Select Preferred Option

4

SCHEMATIC DESIGN

OCTOBER
2022

DESIGN

Initiate Schematic Design

Develop Cost Estimates

Submit to MSBA for Approval

Public Presentations
Preferred Option & Cost

City's Funding Votes
Fall 2022

12/08/21
12/10/21

- Public Meeting #1
- Cost Estimates

< December 2021							January 2022 >						
SU	MO	TU	WE	TH	FR	SA	SU	MO	TU	WE	TH	FR	SA
28	29	30	1	2	3	4							1
5	6	7	8	9	10	11	2	3	4	5	6	7	8
12	13	14	15	16	17	18	9	10	11	12	13	14	15
19	20	21	22	23	24	25	16	17	18	19	20	21	22
26	27	28	29	30	31		23	24	25	26	27	28	29
							30	31					

Evaluation Criteria

Educational Program	How well does the alternative meet the educational goals of Haverhill?
Site / Traffic	How well does the alternative maximize on-site parking, allow for efficient and effective pick-up/drop-off circulation, and maximize green space?
Community	To what extent does the alternative provide benefits to the community, such as green space, community space, and gym space?
Logistics/Construction Impact	What is the impact to the students site during construction? How difficult are the phasing/site logistics?
Total Project Costs	How well does the total project cost align with the City's desire to fund the project without a debt exclusion?

Each criterion was applied using a relative sliding scale from 5 to 1, where a five was best and a 1 was poor. As depicted below, this scale was color coded to provide a clear graphic representation of the evaluation matrix. It is important to note that in this methodology, the scoring is NOT a ranking. If two alternatives achieved a criterion equally, they received the same score.

Best	Better	Good	Fair	Poor
5	4	3	2	1

Evaluation Criteria

Westwood Hanlon Elementary School Evaluation Criteria

2/10/2020		1	2	3	4	5	6	7	8	9	10	11	12	13	14	15
		RO-H.1	AR-HO-H.1	AR-HD-H.2	AR-HS-H.3	AR-HS-S.1	NHO-H.1	NHD-H.1	NHD-H.2	NHD-H.3	NHD-H.4	NHS-H.1	NHS-H.2	NHS-S.1	NHS-S.2	NHS-S.3
type		Reno	Add-Reno	Add-Reno	Add-Reno	Add-Reno	New	New	New	New	New	New	New	New	New	New
size		Hanlon Only 315	Hanlon Only 315	Hanlon-Deerfield 560	Hanlon Sheehan 685	Hanlon Sheehan 685	Hanlon Only 315	Hanlon Deerfield 560	Hanlon Deerfield 560	Hanlon Deerfield 560	Hanlon Deerfield 560	Hanlon Sheehan 685	Hanlon Sheehan 685	Hanlon Sheehan 685	Hanlon Sheehan 685	Hanlon Sheehan 685
location		Hanlon	Hanlon	Hanlon	Hanlon	Sheehan	Hanlon	Hanlon	Hanlon	Hanlon	Hanlon	Hanlon	Hanlon	Sheehan	Sheehan	Sheehan
A	Education	1	2	2	4	4	4	5	4	4	5	5	5	4	4	5
B	Site	1	4	4	4	2	5	5	5	5	5	5	5	2	3	3
C	Traffic		4	4	2	1	5	4	4	4	4	2	2	1	1	1
D	Community	1	3	3	4	2	5	5	5	5	5	5	5	2	2	2
E	Sustainability	1	3	3	4	4	5	5	5	5	5	5	5	5	5	5
F	Logistics / Construction Impact	1	1	2	2	1	4	4	4	4	4	4	4	2	2	2
G	Cost Per SF	791	726	692	700	702	679	652	639	641	651	620	619	623	622	624
		7	17	18	20	14	28	28	27	27	28	26	26	16	17	18

Education How well does the option meet the educational goals of Westwood?

Site How well does the option maximize on-site parking, allow for efficient pick-up/drop-off circulation, and provide access to/parking for sports fields?

Traffic What is the impact of the project to the traffic in the neighborhood and the town?

Community To what extent does the option provide benefits to the community, such as sports fields, community space, and gym space?

Sustainability How well does the option align with the sustainable goals of the town?

Logistics / Construction Impact What is the impact to the students on the project site during construction? How difficult is the phasing/site logistics?

Cost Per Square Foot What is the cost per square foot of construction for each option?

Recommended short list

Best	Better	Good	Fair	Poor
5	4	3	2	1

Recommended Short-Listed Options*

* Includes Base Repair, Option #1 - \$25 M



Public Meeting #1

- Public Meeting #1
- Cost Estimates

Today
12/10/21

Options Evaluation Short List

- PDP Submission

01/07/21

< December 2021							January 2022 >						
SU	MO	TU	WE	TH	FR	SA	SU	MO	TU	WE	TH	FR	SA
28	29	30	1	2	3	4							1
5	6	7	8	9	10	11	2	3	4	5	6	7	8
12	13	14	15	16	17	18	9	10	11	12	13	14	15
19	20	21	22	23	24	25	16	17	18	19	20	21	22
26	27	28	29	30	31		23	24	25	26	27	28	29
							30	31					

Questions?

thank
you

More Information at...

<https://www.haverhill-ps.org/meeting-information/>