

A photograph of two young girls of color hugging each other in front of a red brick wall. The girl on the left has curly hair and is wearing a grey hoodie with a black backpack. The girl on the right is wearing a maroon beanie and a yellow shirt. Both are smiling broadly.

Haverhill Public Schools
Consentino Middle School

Visioning Session #2

10.12.2021

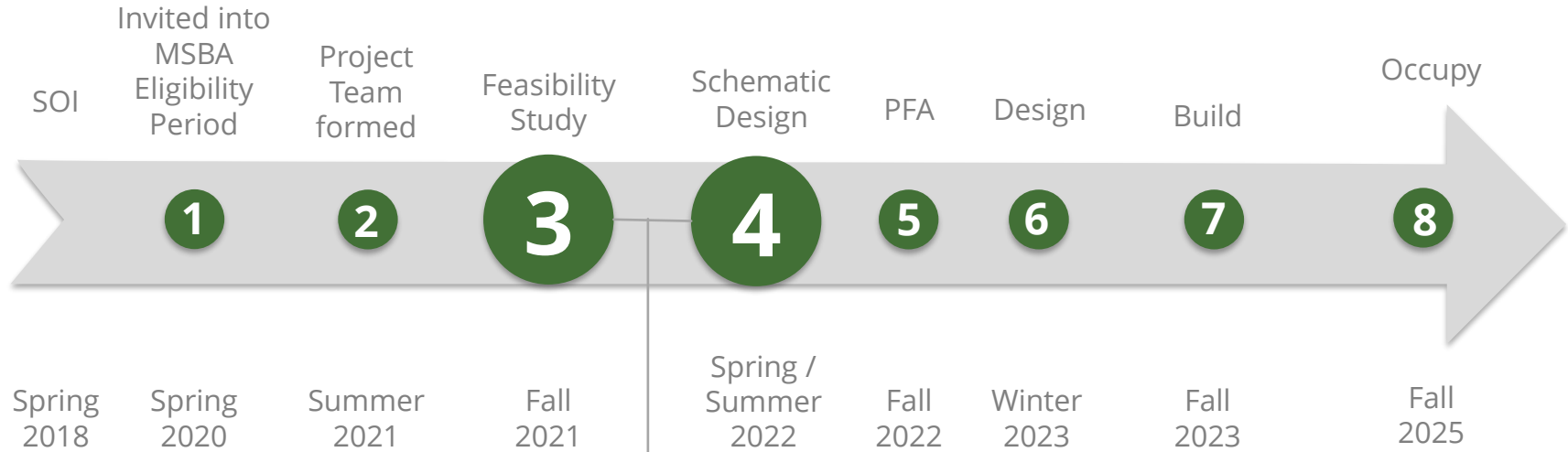


Agenda

- Overview Of MSBA Process
- Review of Visioning Session #1
- Design Enrollment
- Key Spaces Brainstorming
- Functional Relationships Presentation
- Design Guidelines



MSBA PROCESS



- Existing Facility Assessment
- Define Educational Program
- Define Space Requirements
- Explore Many Options
- Explore Cost Estimates
- Narrow to Few Options
- Select Preferred Options
- Set Project Budget

MSBA PROCESS

3

SEPT
2021

FEASIBILITY STUDY

APRIL
2022

PLANNING

Public Visioning Sessions
Educational Program
Enrollment Exploration
Space Summaries

Existing Conditions Review

Develop Full Range of Options

Public Information Sessions

Select Preferred Option

4

SCHEMATIC DESIGN

OCTOBER
2022

DESIGN

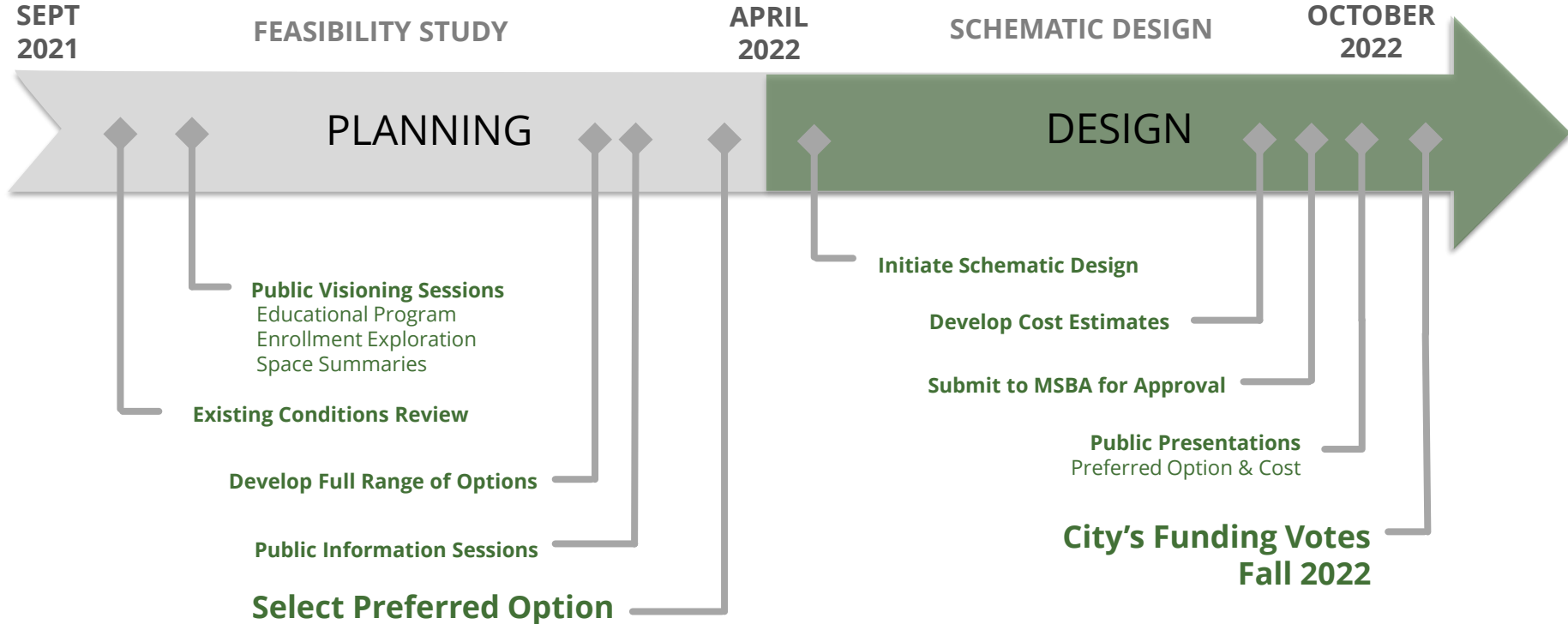
Initiate Schematic Design

Develop Cost Estimates

Submit to MSBA for Approval

Public Presentations
Preferred Option & Cost

City's Funding Votes
Fall 2022





Key Project Decisions

- **Design Enrollment**
 - 715 Students
 - 985 Students (Tilton Upper School Remains in Service)
 - 1,080 Students (without Tilton Upper School in service)
- **Design & Construction Approach**
 - Renovation Only
 - Renovation/Addition
 - All New Construction
- **Project Budget**

Questions



**The World Has
changed**



The World Has changed

- Automation & Artificial Intelligence
- Authenticity of Information
- Global Pandemic



“We are currently preparing students for jobs that don’t yet exist, using technologies that haven’t yet been invented, in order to solve problems that we don’t even know are problems yet.”

- Karl Fisch, Educator

Education has changed



Education has changed

- More Individualized
- More Inclusive
- More Active / Engaging / Authentic
- What's worth knowing



Facilities have changed



Facilities have changed

- More Environmentally Sustainable
- More Varied
- More Flexible
- More Community-Oriented





At your table, develop a positive headline about the project that communicates a vision for the project



design enrollment



715

5TH-8TH
Current
Configuration

985

5TH-8TH
Tilton Upper
Remains in
Service

1,080

5TH-8TH
w/o Tilton Upper
in Service

Exercise #1

- What are the important considerations related to choosing a design enrollment?
- What questions do you have about the design enrollment decision?
- What are the advantages or disadvantages to any of these?

Exercise #1a Ejercicio #1a

What are the important considerations related to choosing a design enrollment?

¿Cuáles son las consideraciones importantes relacionadas con la elección de la inscripción para el diseño?

What questions do you have about the design enrollment decision?

¿Qué preguntas tiene sobre la decisión de la inscripción para el diseño?

Exercise #1b Ejercicio #1b

715 Enrollment
(Current Configuration)

Inscripción de 715
(Configuración actual)

Ventajas

Advantages

Desventajas

Disadvantages

¿Otros pensamientos?

Other Thoughts

985 Enrollment
(Tilton Upper Remains
in Service)

Inscripción de 985
(Tilton Upper
permanece en servicio)

Ventajas

Advantages

Desventajas

Disadvantages

¿Otros
pensamientos?

Other Thoughts

1,080 Enrollment
(Without Tilton Upper in
Service)

Inscripción de 1,080
(Sin Tilton Upper
en servicio)

Ventajas

Advantages

Desventajas

Disadvantages

¿Otros
pensamientos?

Other Thoughts

reporting
out

straw
poll

key spaces

(OR GROUPS OF SPACES)



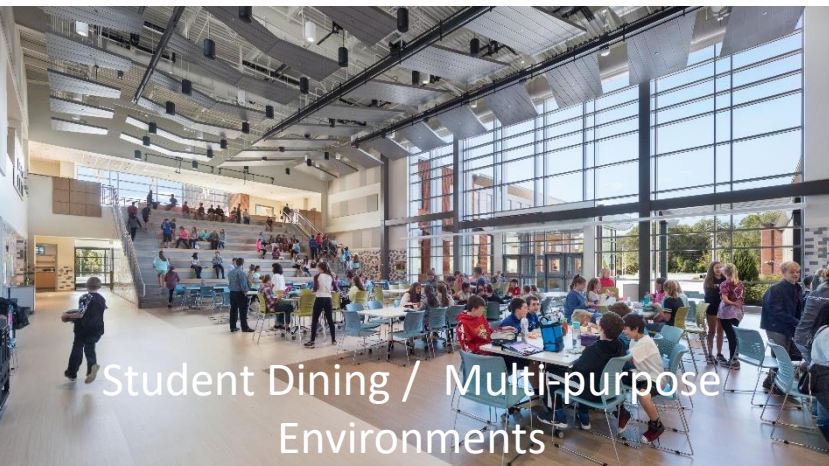
- Core Academic
- Performing Arts
- Student Dining
- Health, Physical Education, and Athletics
- Visual Arts
- Science, Technology, Engineering, & Math
- Middle School Grade Level Teams
- Administration & Guidance
- Community Health Clinic
- Special Education
- Student Support Services
- Sports Fields & Site Amenities



Classroom Environments



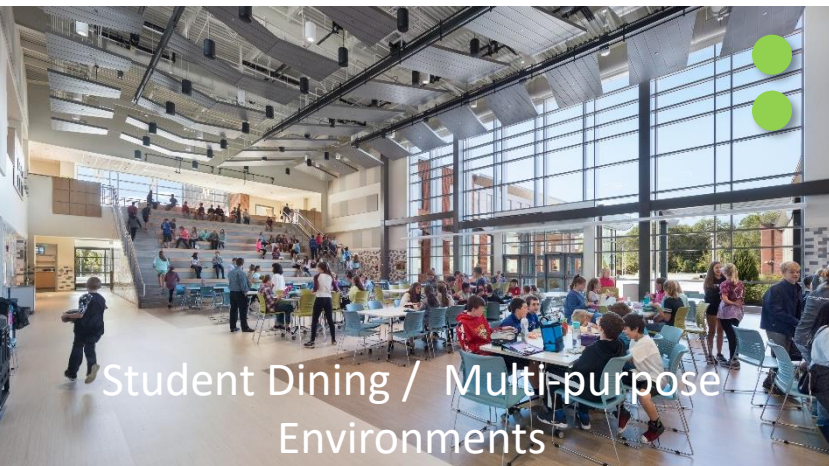
Performance Environments



Student Dining / Multi-purpose Environments

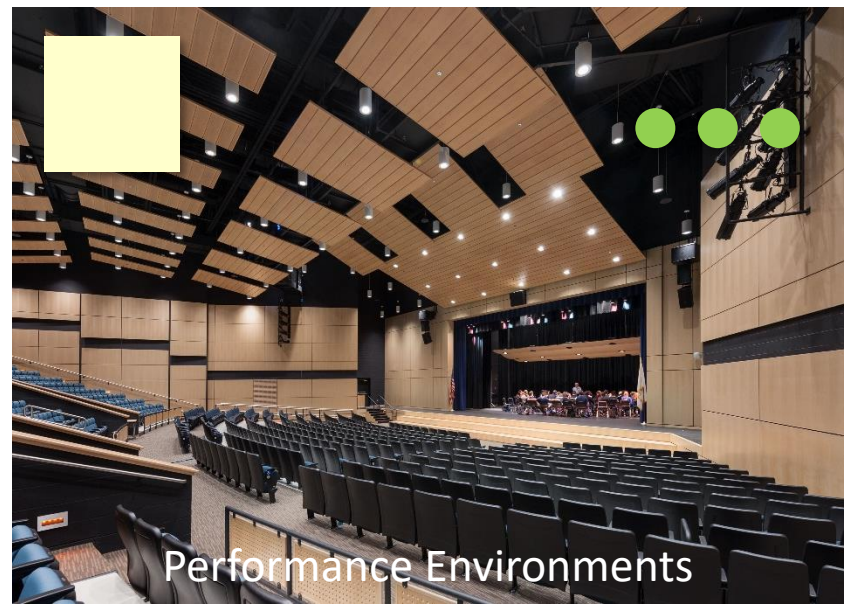


Break Out Spaces

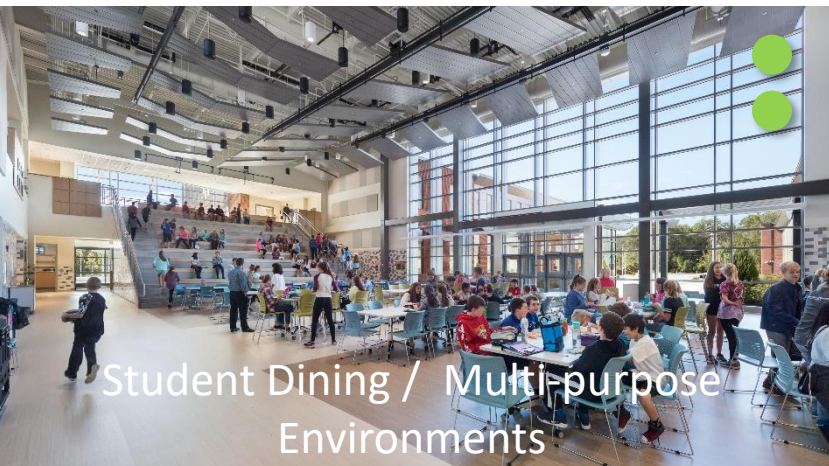




Classroom Environments



Performance Environments



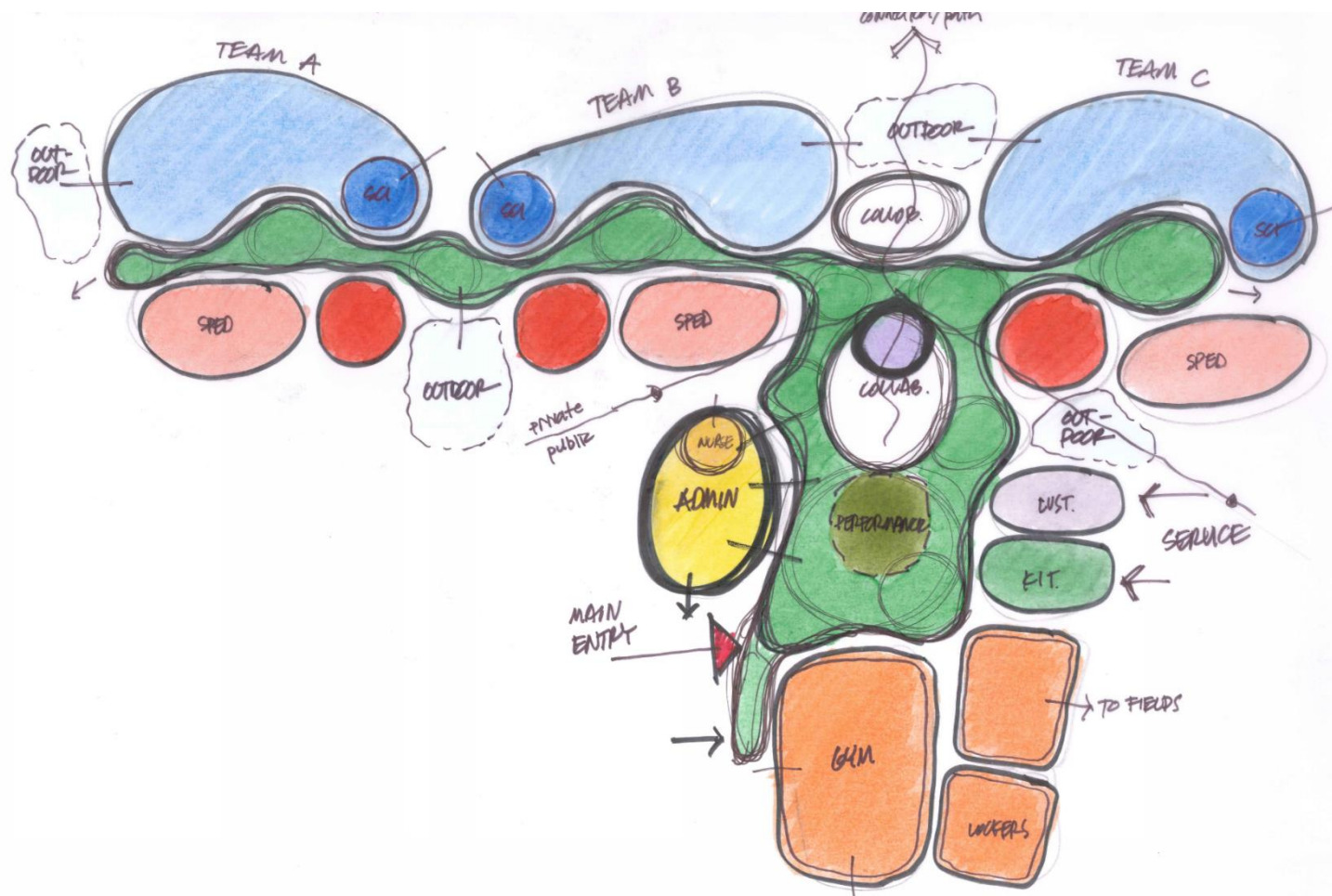
Student Dining / Multi-purpose Environments

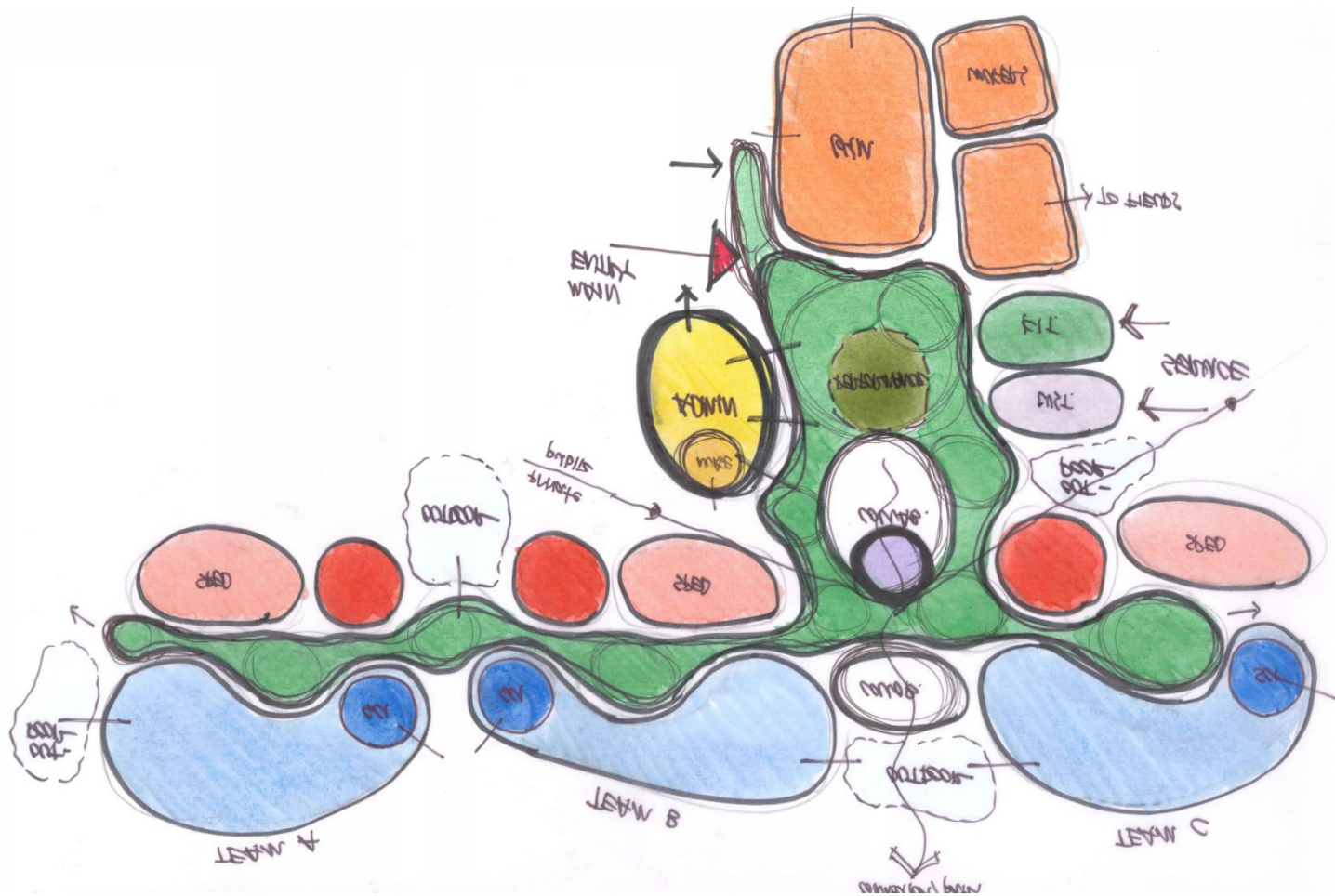


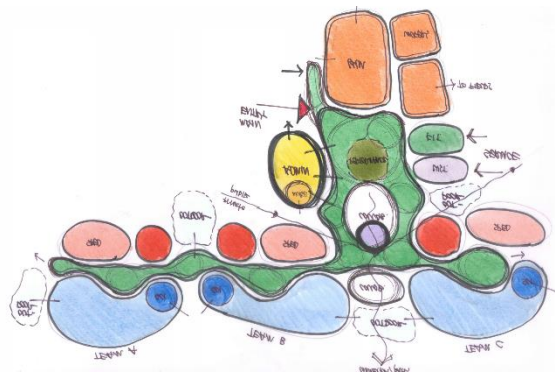
Break Out Spaces



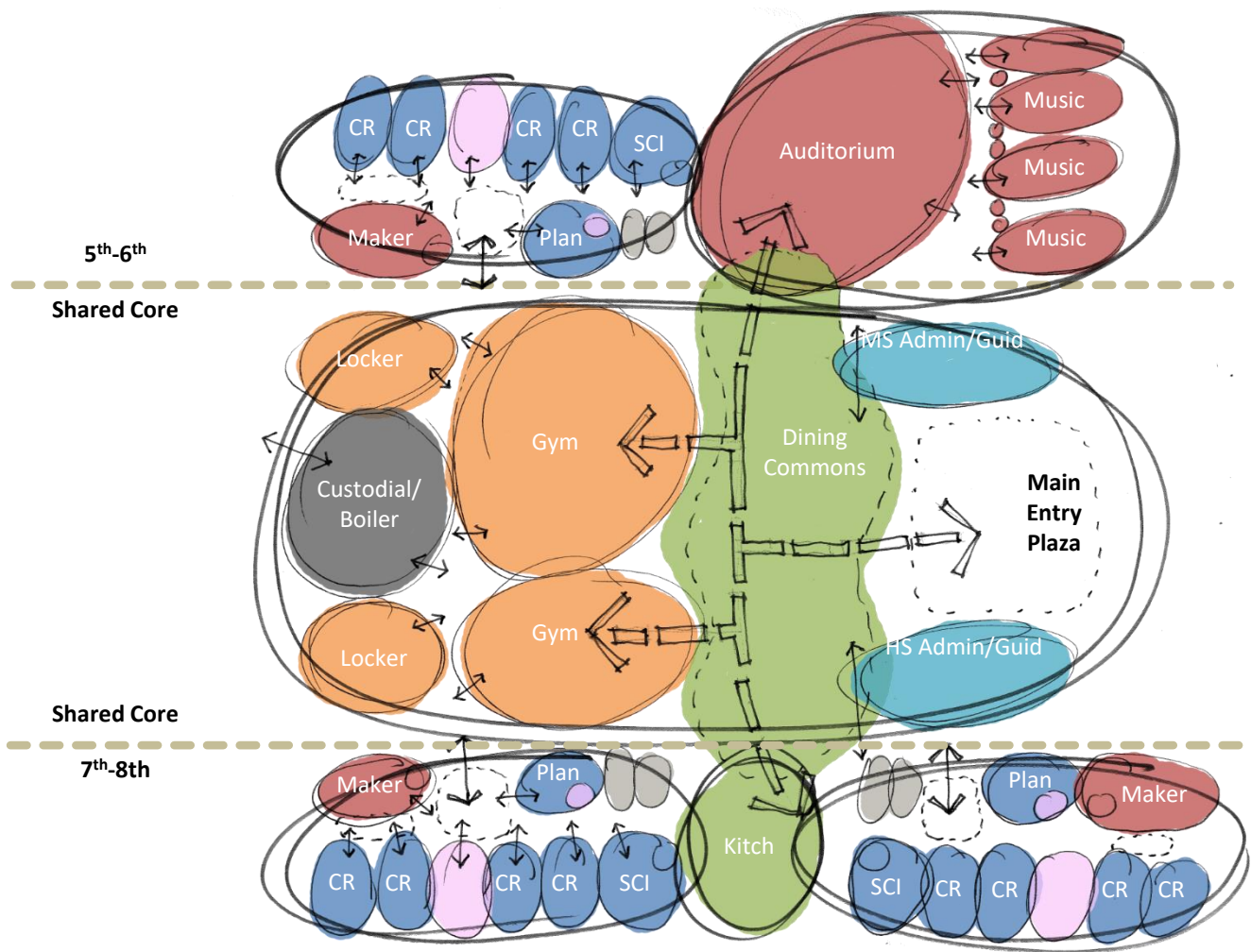
functional
relationships





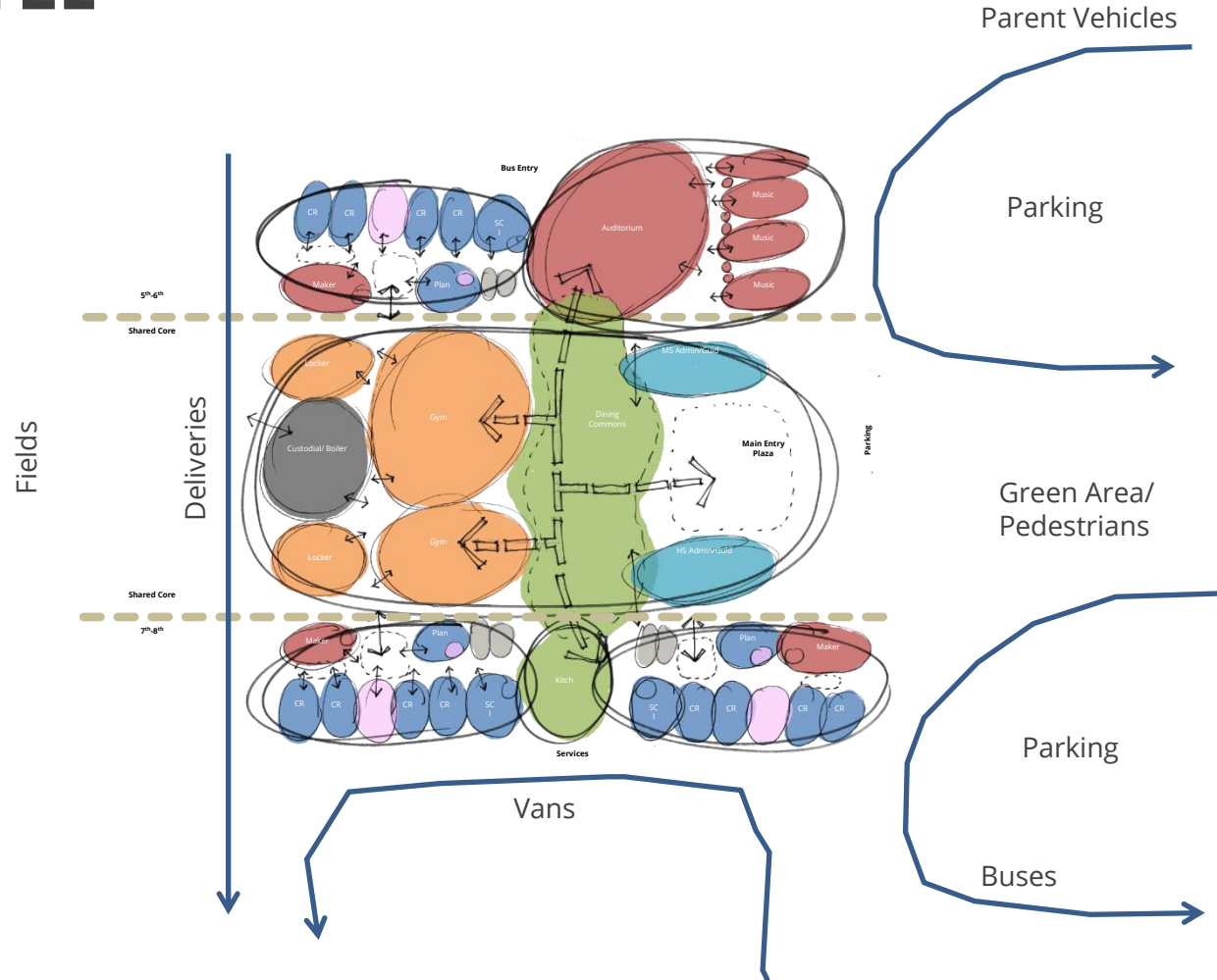


Programming Legend

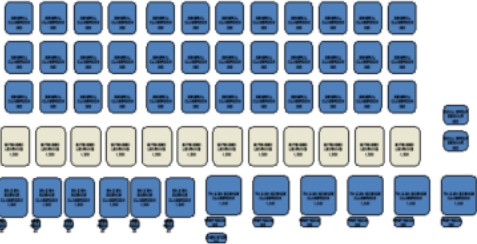


BIG CONCEPT TITLE

- Bulleted List Describing important functional relationships
- Identify areas of separation
- Identify areas of entry
- Think about building's relationship to site features... sports fields, parking



CORE ACADEMIC



SPECIAL EDUCATION



ART & MUSIC



HEALTH & PE



MEDIA CENTER



ADMINISTRATION & GUIDANCE



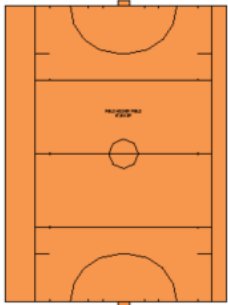
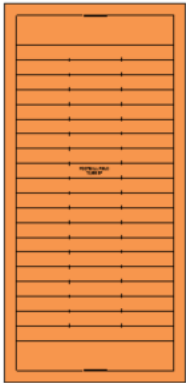
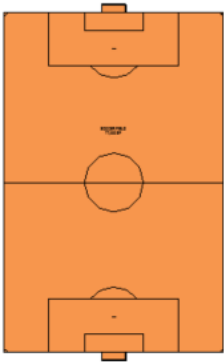
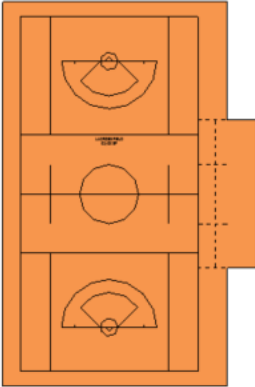
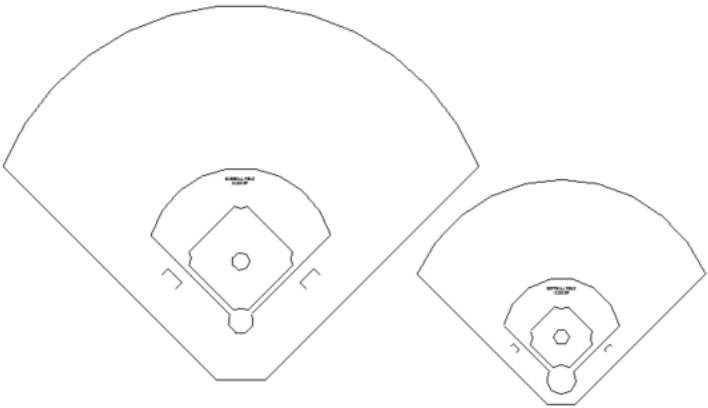
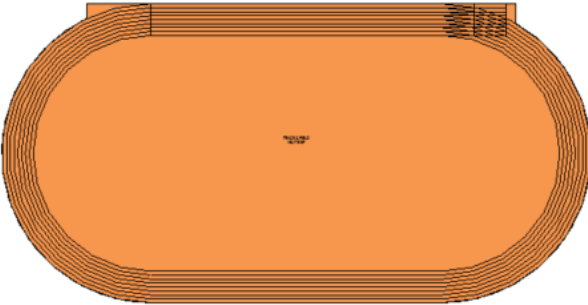
TECH/ FLEX/ MAKER



MEDICAL



CUSTODIAL & MAINTENANCE



As small groups, create an idealized conceptual diagram.

feedback



I really like
this idea...



Would you
consider this
change...

reporting
OUT



design guidelines

Identify Guiding Design Principles

let's get all fired up
for the

BACK TO SCHOOL BBQ!

Join us at A. B. Consentino for our
complimentary Back to School BBQ
and Title 1 information night!

Tuesday, September 21 from 5pm-7pm

Expect food, drinks, and a movie in the big gym!

Bring your own blankets/lawn chairs

Popcorn and cotton candy will be available for purchase from
our National Junior Honor Society

Rain date: September 28

Consentino Middle School

DREAM BIG



key take
aways

next
steps

- October 26th - Visioning Session #3
- Preparation of Educational Program Narrative
- Preparation of Space Summary
- Development of Options
- January 6th - Submission of Preliminary Design Program

thank
you