



4 Summer Street
Haverhill, MA 01830
(978) 374-3435

<https://www.haverhill-ps.org/sped/>

Haverhill Special Education Family Newsletter

Spring 2021



What's inside?

- SEPAC INFORMATION
- \$\$\$ ABL ACCOUNTS \$\$\$
- TRANSITION TIPS
- DDS FAMILY SUPPORT CENTER

"An investment in knowledge
pays the best interest".

- *Benjamin Franklin*



Commonly Used Vocabulary

IEP - Individualized Education Plan

ETF - Educational Team Facilitator

SEPAC - Special Education Parent
Advisory Council

ESY - Extended School Year

ABA - Applied Behavior Analysis

Secondary - High School

MCAS - Massachusetts Comprehensive
Assessment System



SEPAC is an acronym that stands for Special Education Parent Advisory Council. The Haverhill SEPAC (HaverhillSEPAC.com) is comprised of individuals involved in, or concerned with, the education of students with disabilities.

Membership is open to parents and guardians of students with disabilities, teachers, administrators, individuals with disabilities, and interested members of the community. Haverhill SEPAC is an all-volunteer organization.

Haverhill SEPAC held a virtual Basic Rights training on March 24, 2021. The video is available at bit.ly/basic-rights.

Haverhill SEPAC held a Basic Rights Training in Spanish for the first time in Haverhill on January 22, 2019. The video is available at bit.ly/basic-rights-spanish.

www.haverhillsepac.com

SIGN UP FOR SEPAC EMAILS

Haverhill SEPAC is looking for new officers. If you are interested, please contact:

Chairperson, Haverhill SEPAC

Anne Rosa

info@haverhillsepac.com



ABLE Account



Helps preserve disability benefits

Money in the account does not impact Medicaid benefits and balances below \$100,000 do not impact SSI benefits.

A simpler way to plan for the future

Save more easily for disability-related expenses, and access your money whenever you need it.

A tax-smart way to save

Earnings in the account grow tax-deferred and, when used for qualified disability expenses, are federal income tax-free.











<https://www.fidelity.com/able/attainable/overview>



ABLE Account



Qualified Expenses for ABLE Accounts

-  Health
-  Housing
-  Education
-  Transportation
-  Assistive Technology Support
-  Employment Training & Support
-  Personal Support Services
-  Basic Living Needs



Mary Rubenis at mrubenis@mefa.org



facebook.com/mefaMA



[@MEFAtweets](https://twitter.com/MEFAtweets)



linkedin.com/company/mefa



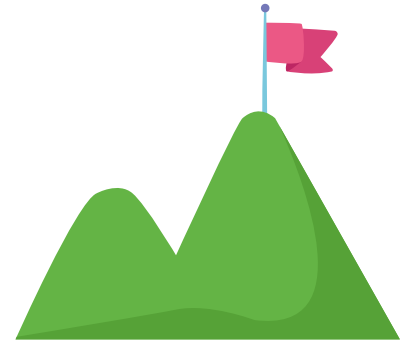
youtube.com/MEFAcounselor

<https://www.fidelity.com/able/attainable/overview>

TIPS

(Transition Information for Parents and Students)

"The more engaged students are in planning their own futures, the more promising those futures are likely to be."



TIP 1: Make sure you start planning early.

- Transition planning and services begin at age 14.
- The student is invited to be a part of the IEP Team at age 14.
- The student needs to understand their role in developing their vision.

TIP 2: Transition starts with a student's vision.

- Vision = Postsecondary Goals.
- Postsecondary Goals are what a student wants to do after they leave high school.
- Postsecondary Goals will likely change year to year as a student has different experiences and gains new skills.

TIP 3: Transition assessments are needed for planning.

- Both formal and informal assessments can help the IEP Team know what transition services should be provided.
- They also give feedback on how well a student is doing.

TIP 4: Transition planning is a process.

- The transition should be discussed at every IEP Team meeting beginning when a student turns 14
- The meeting should start by using the Transition Planning Form (TPF) and talk about Postsecondary Goals.
- Team members should talk about what a student is interested in doing after high school and what supports they will need to get there.



Greater Haverhill-Newburyport New Family Support Center!

A Hub of Information & Resources:

We are honored to have been selected by the Massachusetts Department of Developmental Services (DDS) as a new Family Support Center within the Merrimack Valley. Family Support has been at the core of our agency's vision since its inception. With offices in both Haverhill and Newburyport, we are here to serve individuals with I/DD who live within our communities and the families who care for them.

Family Supports we Provide:

- Information and Referral Resources Throughout the Lifespan
- Support Groups and Individual Consultations
- Recreational and Peer Support Opportunities
- Workshops, Webinars, and Training
- DDS approved Flexible Funding (DDS referral only)
- Navigation support during times of crisis or transition(DDS referral only)

Achieve with Us:

Andrea Morris, Director of Family Supports

Andrea.Morris@thearcofghn.org

(978) 373-05520 x211

57 Wingate Street, Suite 301
Haverhill, MA 01832

4 Winter Street, Suite D
Newburyport, MA 01950



www.thearcofghn.org