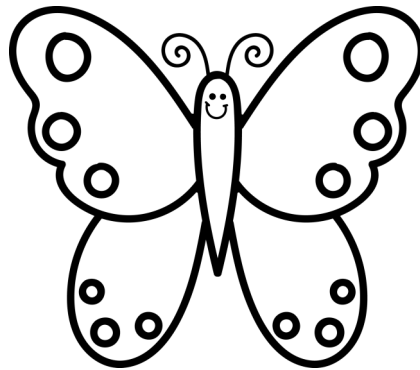
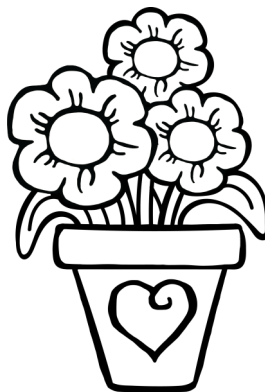


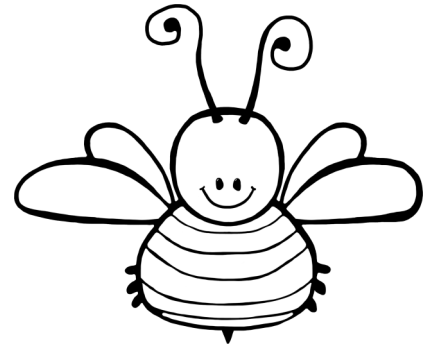
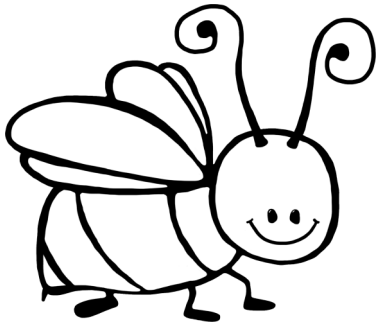
Where is the Butterfly?



© themeasuredmom.com

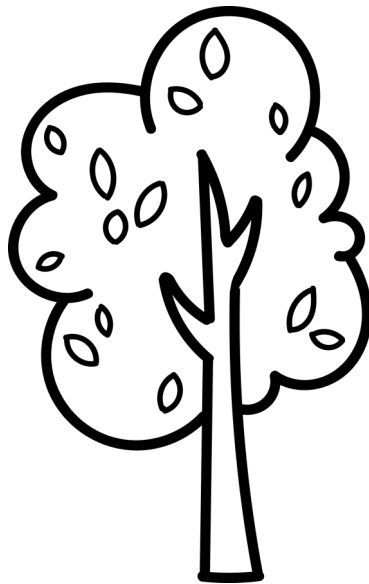


The butterfly is above the flowers.



The butterfly is between the bees.

2



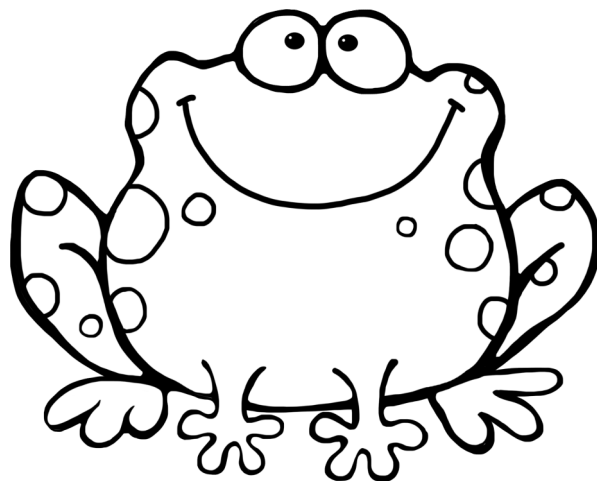
The butterfly is beside the tree.

3



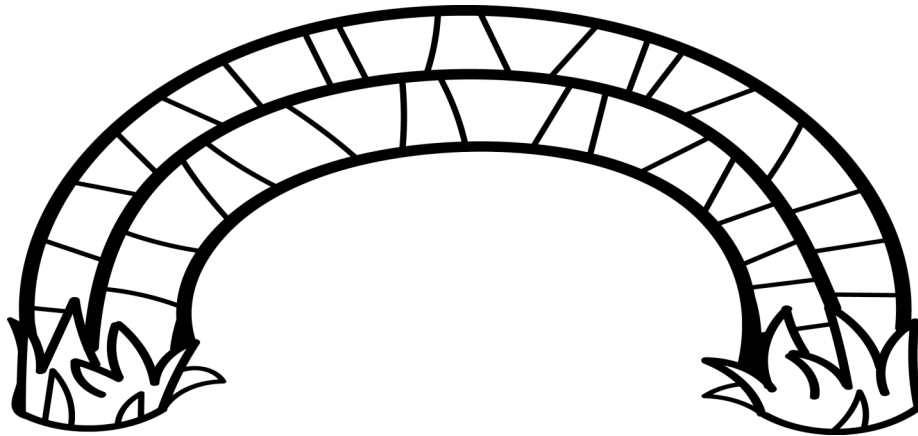
The butterfly is in front of the kitten.

4



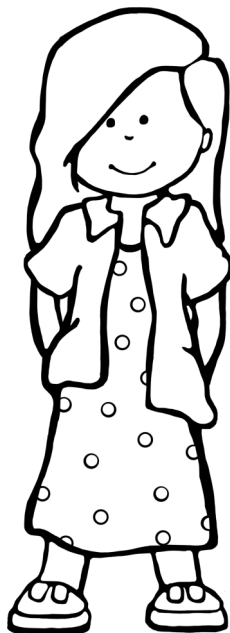
The butterfly is on top of the frog.

5



The butterfly is below the bridge.

6



The butterfly is near the girl.

7



The butterfly is under the net.

