

# MSBA Enrollment Projection – Haverhill

## Historic Enrollment Data (DESE)

YEAR	PK	K	1	2	3	4	5	6	7	8	9	10	11	12	K-12
1993-94	161	624	787	777	746	663	667	631	583	591	344	370	357	321	7,461
1994-95	143	692	742	790	751	745	662	674	629	587	448	317	355	334	2,320
1995-96	121	667	832	712	791	754	727	660	657	614	441	399	339	297	7,890
1996-97	140	745	814	796	720	798	759	742	674	666	477	378	378	297	8,244
1997-98	167	650	853	774	799	726	797	748	732	669	479	409	369	312	8,317
1998-99	156	612	719	811	769	810	724	776	744	743	517	441	377	331	8,374
1999-00	181	584	700	713	785	770	781	699	774	718	576	472	422	339	8,333
2000-01	177	582	675	691	699	796	788	766	703	786	586	494	448	357	8,371
2001-02	207	631	679	656	673	689	815	769	757	731	627	528	480	389	8,424
2002-03	169	596	675	649	614	647	672	763	774	727	569	546	485	417	8,134
2003-04	149	593	659	639	621	598	645	661	745	774	561	472	496	430	7,894
2004-05	167	544	621	581	588	599	601	627	650	718	684	491	441	464	7,609
2005-06	149	529	603	596	560	581	590	601	611	642	655	567	461	435	7,431
2006-07	150	545	600	590	614	568	577	587	604	619	621	521	539	446	7,431
2007-08	137	547	570	567	593	615	552	578	581	616	566	478	496	476	7,235
2008-09	161	484	545	517	477	500	481	550	601	588	554	455	455	450	6,657
2009-10	181	466	528	525	500	484	508	605	571	613	533	465	444	397	6,639
2010-11	184	463	514	519	520	505	482	610	615	580	529	457	432	377	6,603
2011-12	193	524	513	501	523	539	524	584	621	637	489	470	451	396	6,772
2012-13	182	586	593	494	490	531	535	595	571	634	497	470	449	401	6,846
2013-14	188	600	596	577	477	482	528	610	604	576	574	465	420	431	6,940
2014-15	180	577	605	587	560	485	512	622	622	604	450	540	465	404	7,033
2015-16	199	519	635	602	600	558	502	608	617	628	482	439	474	426	7,090
2016-17	203	535	559	623	611	607	577	616	602	639	520	460	398	460	7,207
2017-18	221	524	570	557	608	601	615	678	636	608	587	436	427	393	7,240
2018-19	200	589	665	635	639	709	680	715	682	649	504	538	416	396	7,817
2019-20	232	586	635	659	657	640	723	678	703	688	458	493	522	410	7,852

K	1-4	5-8	9-12
624	2,973	2,472	1,392
692	3,028	2,552	1,454
667	3,089	2,658	1,476
745	3,128	2,841	1,530
650	3,152	2,946	1,569
612	3,109	2,987	1,666
584	2,968	2,972	1,809
582	2,861	3,043	1,885
631	2,697	3,072	2,024
596	2,585	2,936	2,017
593	2,517	2,825	1,959
544	2,389	2,596	2,080
529	2,340	2,444	2,118
545	2,372	2,387	2,127
547	2,345	2,327	2,016
484	2,039	2,220	1,914
466	2,037	2,297	1,839
463	2,058	2,287	1,795
524	2,076	2,366	1,806
586	2,108	2,335	1,817
600	2,132	2,318	1,890
577	2,237	2,360	1,859
519	2,395	2,355	1,821
535	2,400	2,434	1,838
524	2,336	2,537	1,843
589	2,648	2,726	1,854
586	2,591	2,792	1,883

# MSBA Enrollment Projection – Haverhill

## Historic Birth Data (MA Department of Public Health)

Maternal Age	1989	1990	1991	1992	1993	1994	1995	1996	1997	1998	1999	2000	2001	2002	2003	2004	2005	2006	2007	2008	2009	2010	2011	2012	2013	2014	2015	2016
10-14 Yrs	6	0	0	0	0	0	0	0	0	0	0	0	0	0	0	0	0	0	0	0	0	0	0	0	0	0	0	0
15-19 Yrs	116	94	109	98	83	76	88	69	87	80	82	68	62	67	53	56	59	73	67	61	70	56	56	41	40	41	36	31
20-24 Yrs	250	238	235	208	196	172	167	180	158	163	176	148	166	154	163	159	152	164	172	175	185	153	155	150	141	129	145	110
25-29 Yrs	364	372	338	324	284	258	250	282	248	227	267	214	245	218	232	203	224	251	270	245	244	251	211	239	244	216	219	229
30-34 Yrs	215	245	263	300	278	271	258	274	239	254	259	273	267	260	286	297	237	255	240	267	257	235	254	258	233	233	229	229
35-39 Yrs	45	72	82	76	88	75	85	88	105	104	117	122	143	134	137	120	126	131	160	106	116	106	102	101	114	123	123	107
40-44 Yrs	10	5	6	5	5	5	14	16	20	15	15	23	21	15	23	33	24	27	17	28	20	22	24	24	27	21	20	
Total Births	1,006	1,027	1,034	1,012	936	859	863	910	858	845	921	848	905	848	897	872	824	904	928	882	895	826	802	813	800	766	773	726

## Female Population Data

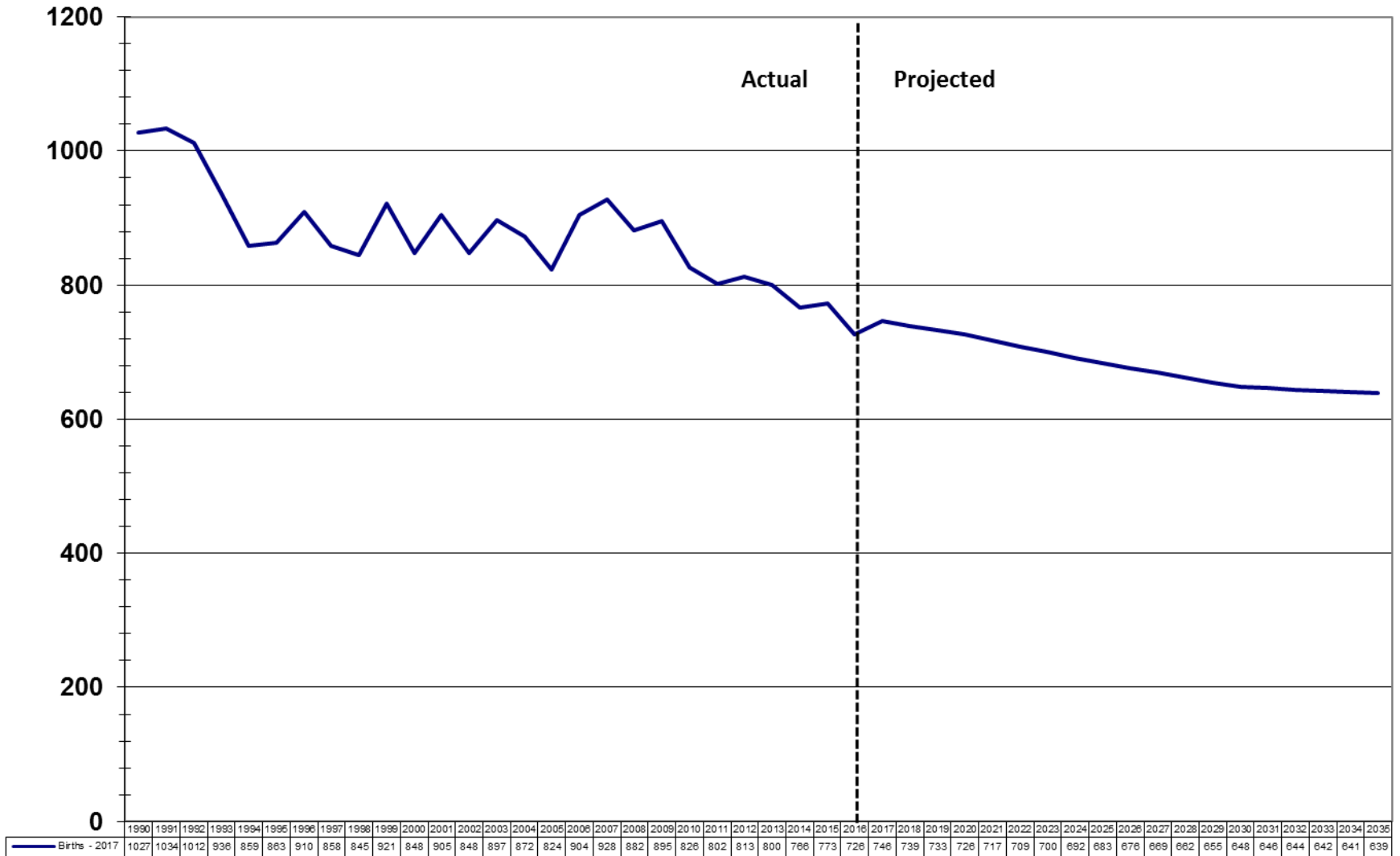
Maternal Age	US Census Data			U Mass Donohue Institute						2014-2016 Avg Fertility Rate
	1990	2000	2010	2015	2020	2025	2030	2035	2040	
10-14 Yrs	1,405	2,011	1,755	1,700	1,674	1,667	1,511	1,458	1,404	0.00%
15-19 Yrs	1,556	1,793	1,791	1,725	1,501	1,501	1,499	1,381	1,346	2.12%
20-24 Yrs	2,024	1,703	1,933	2,039	1,674	1,537	1,576	1,557	1,471	6.44%
25-29 Yrs	2,846	2,217	2,187	2,274	2,212	1,896	1,828	1,950	1,957	9.88%
30-34 Yrs	2,659	2,624	2,203	2,371	2,343	2,312	2,010	1,984	2,163	9.88%
35-39 Yrs	1,945	2,861	2,175	2,236	2,299	2,295	2,277	1,991	1,968	5.32%
40-44 Yrs	1,734	2,495	2,410	2,089	2,159	2,234	2,241	2,235	1,952	0.65%
Total Females	26,886	30,985	31,672	33,064	33,347	33,733	34,142	34,537	34,865	2.29%

## Birth Projections

Maternal Age	2017	2018	2019	2020	2021	2022	2023	2024	2025	2026	2027	2028	2029	2030	2031	2032	2033	2034	2035
10-14 Yrs	0	0	0	0	0	0	0	0	0	0	0	0	0	0	0	0	0	0	0
15-19 Yrs	35	34	33	32	32	32	32	32	32	32	32	32	32	32	31	31	30	30	29
20-24 Yrs	122	117	112	108	106	104	102	101	99	99	100	100	101	101	101	101	101	100	100
25-29 Yrs	222	221	220	219	212	206	200	194	187	186	185	183	182	181	183	185	188	190	193
30-34 Yrs	233	233	232	231	231	230	230	229	228	222	216	210	204	199	198	197	197	196	196
35-39 Yrs	120	121	122	122	122	122	122	122	122	122	122	122	121	121	118	115	112	109	106
40-44 Yrs	14	14	14	14	14	14	14	14	15	15	15	15	15	15	15	15	15	15	15
Totals	746	739	733	726	717	709	700	692	683	676	669	662	655	648	646	644	642	641	639

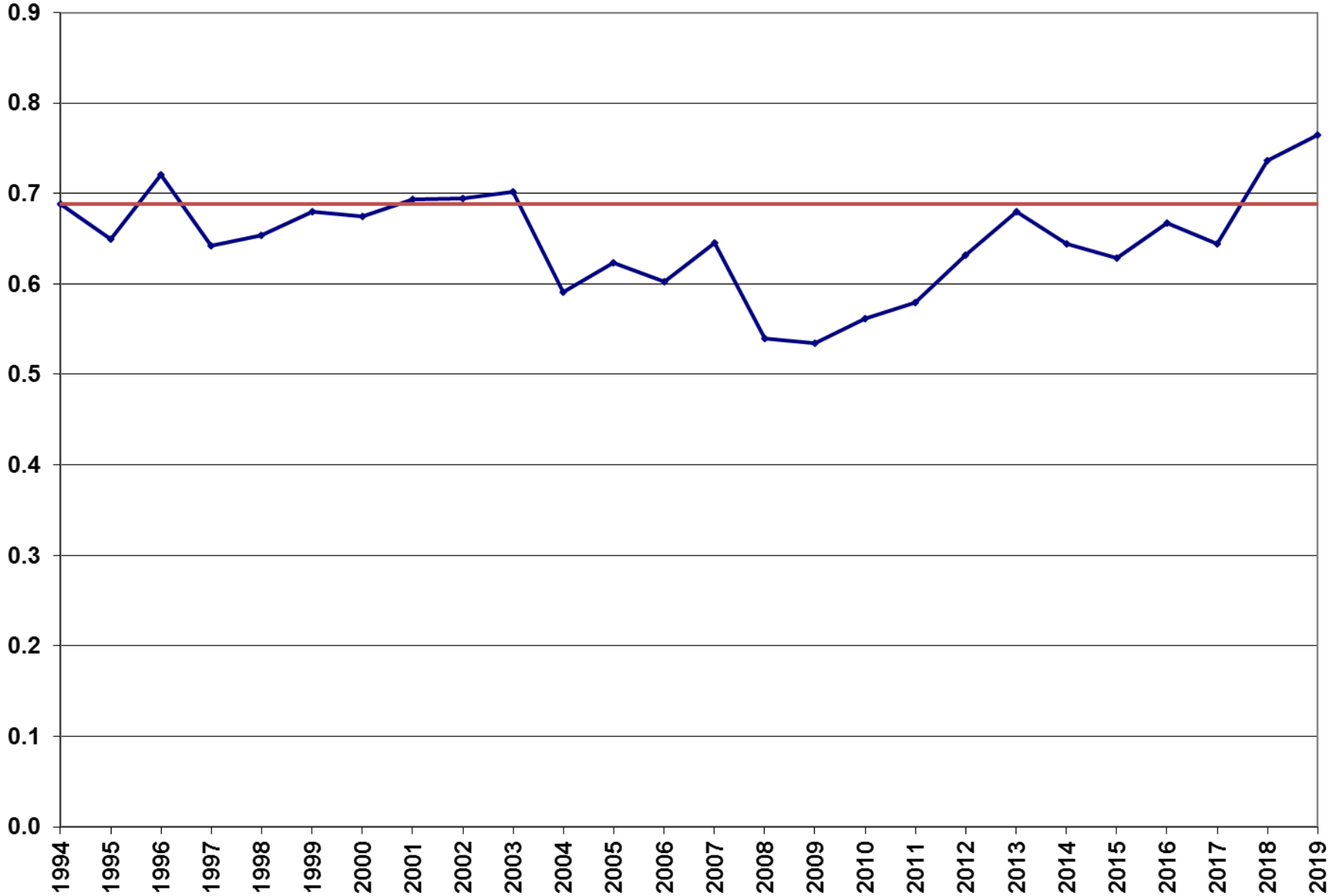
# MSBA Enrollment Projection – Haverhill

## Haverhill Births

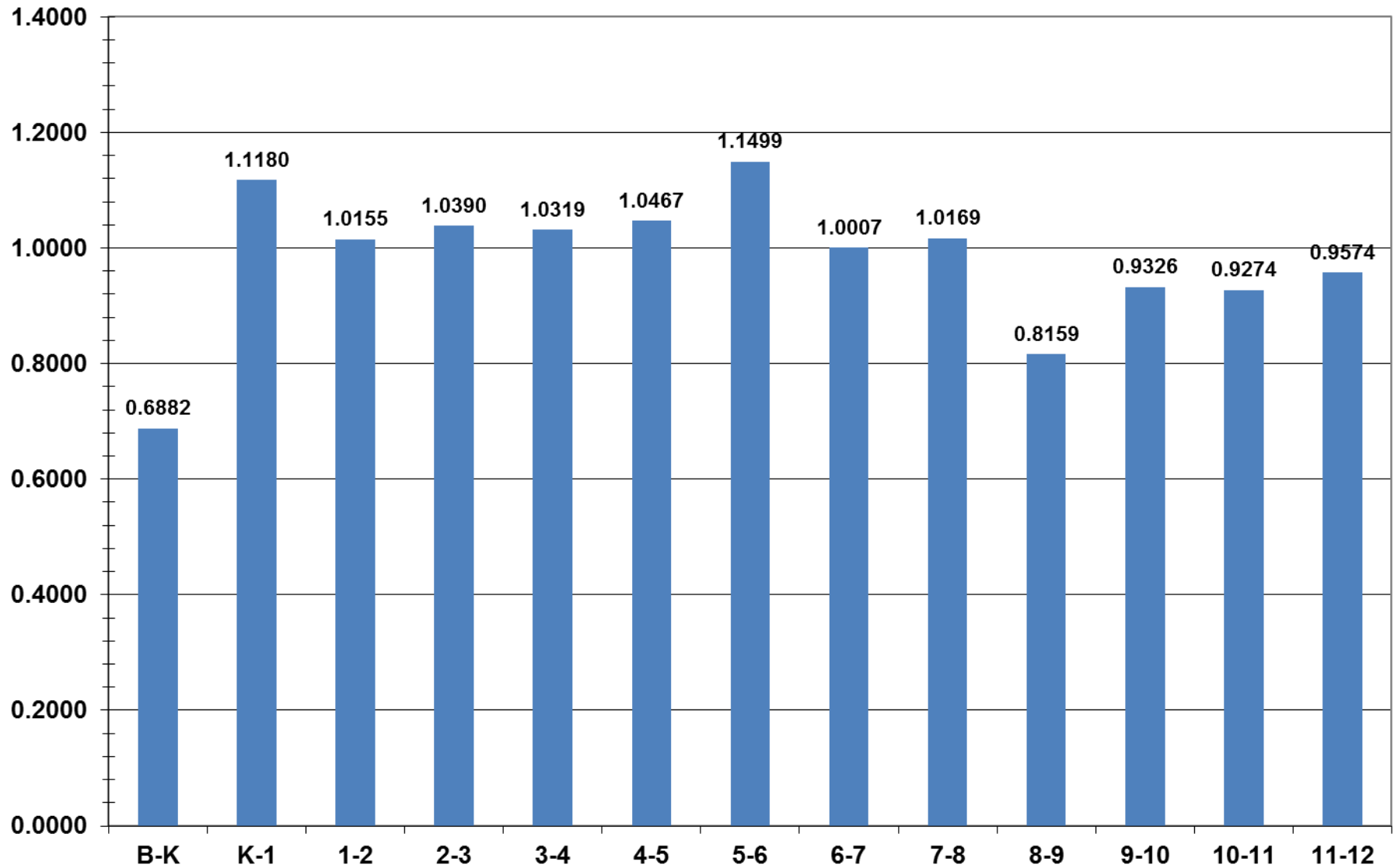


# MSBA Enrollment Projection – Haverhill

## Haverhill Birth to Kindergarten Ratio



## Haverhill Grade-to-Grade Ratios - 5 Yr Average



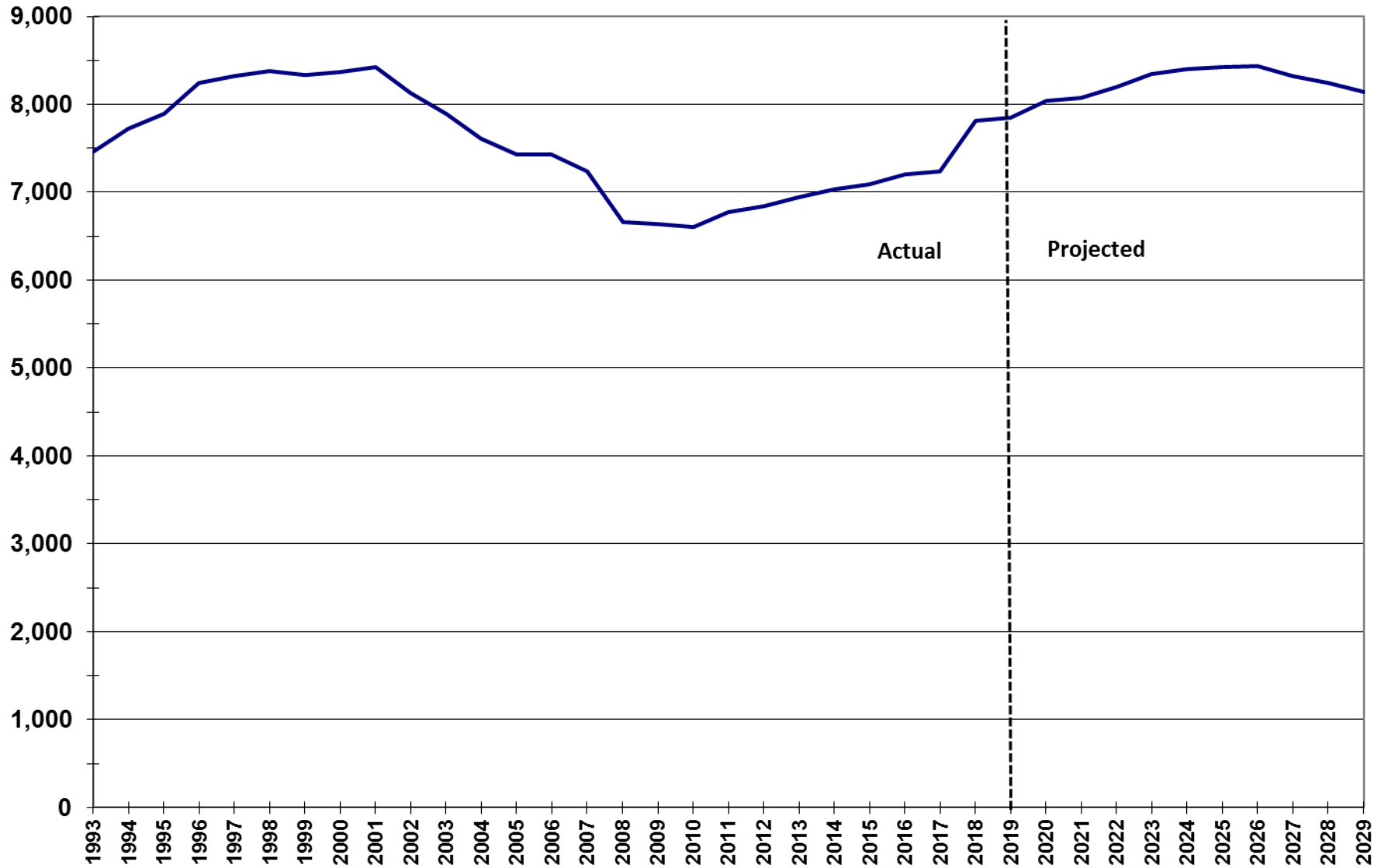
# MSBA Enrollment Projection – Haverhill

## Base Enrollment Projections

YEAR	K	1	2	3	4	5	6	7	8	9	10	11	12	K-12	K	1-4	5-8	9-12
1993	624	787	777	746	663	667	631	583	591	344	370	357	321	7,461	624	2,973	2,472	1,392
1994	692	742	790	751	745	662	674	629	587	448	317	355	334	7,726	692	3,028	2,552	1,454
1995	667	832	712	791	754	727	660	657	614	441	399	339	297	7,890	667	3,089	2,658	1,476
1996	745	814	796	720	798	759	742	674	666	477	378	378	297	8,244	745	3,128	2,841	1,530
1997	650	853	774	799	726	797	748	732	669	479	409	369	312	8,317	650	3,152	2,946	1,569
1998	612	719	811	769	810	724	776	744	743	517	441	377	331	8,374	612	3,109	2,987	1,666
1999	584	700	713	785	770	781	699	774	718	576	472	422	339	8,333	584	2,968	2,972	1,809
2000	582	675	691	699	796	788	766	703	786	586	494	448	357	8,371	582	2,861	3,043	1,885
2001	631	679	656	673	689	815	769	757	731	627	528	480	389	8,424	631	2,697	3,072	2,024
2002	596	675	649	614	647	672	763	774	727	569	546	485	417	8,134	596	2,585	2,936	2,017
2003	593	659	639	621	598	645	661	745	774	561	472	496	430	7,894	593	2,517	2,825	1,959
2004	544	621	581	588	599	601	627	650	718	684	491	441	464	7,609	544	2,389	2,596	2,080
2005	529	603	596	560	581	590	601	611	642	655	567	461	435	7,431	529	2,340	2,444	2,118
2006	545	600	590	614	568	577	587	604	619	621	521	539	446	7,431	545	2,372	2,387	2,127
2007	547	570	567	593	615	552	578	581	616	566	478	496	476	7,235	547	2,345	2,327	2,016
2008	484	545	517	477	500	481	550	601	588	554	455	455	450	6,657	484	2,039	2,220	1,914
2009	466	528	525	500	484	508	605	571	613	533	465	444	397	6,639	466	2,037	2,297	1,839
2010	463	514	519	520	505	482	610	615	580	529	457	432	377	6,603	463	2,058	2,287	1,795
2011	524	513	501	523	539	524	584	621	637	489	470	451	396	6,772	524	2,076	2,366	1,806
2012	586	593	494	490	531	535	595	571	634	497	470	449	401	6,846	586	2,108	2,335	1,817
2013	600	596	577	477	482	528	610	604	576	574	465	420	431	6,940	600	2,132	2,318	1,890
2014	577	605	587	560	485	512	622	622	604	450	540	465	404	7,033	577	2,237	2,360	1,859
2015	519	635	602	600	558	502	608	617	628	482	439	474	426	7,090	519	2,395	2,355	1,821
2016	535	559	623	611	607	577	616	602	639	520	460	398	460	7,207	535	2,400	2,434	1,838
2017	524	570	557	608	601	615	678	636	608	587	436	427	393	7,240	524	2,336	2,537	1,843
2018	589	665	635	639	709	680	715	682	649	504	538	416	396	7,817	589	2,648	2,726	1,854
2019	586	635	659	657	640	723	678	703	688	458	493	522	410	7,852	586	2,591	2,792	1,883
2020	532	655	645	685	678	670	831	678	715	561	427	457	500	8,035	532	2,663	2,895	1,945
2021	500	595	665	670	707	710	770	832	690	583	523	396	438	8,079	500	2,637	3,002	1,941
2022	513	559	604	691	691	740	816	771	846	563	544	485	379	8,203	513	2,545	3,172	1,972
2023	509	574	567	628	713	724	850	817	784	690	525	504	465	8,350	509	2,482	3,174	2,184
2024	504	569	583	589	648	747	832	851	830	640	644	487	483	8,406	504	2,389	3,260	2,253
2025	500	564	578	606	608	678	859	833	865	677	596	597	466	8,426	500	2,355	3,234	2,337
2026	494	559	572	600	625	637	779	859	847	706	632	553	572	8,434	494	2,356	3,122	2,462
2027	488	552	567	595	619	654	732	780	874	691	658	586	530	8,326	488	2,333	3,040	2,465
2028	482	545	561	589	614	648	752	733	793	713	644	611	561	8,246	482	2,309	2,926	2,529
2029	476	539	554	582	608	642	745	753	745	647	665	598	585	8,139	476	2,283	2,885	2,494
10 yr avg	550	589	575	569	566	568	632	627	624	509	477	445	409	7,140	550	2,298	2,451	1,841
5 yr avg	551	613	615	623	623	619	659	648	642	510	473	447	417	7,441	551	2,474	2,569	1,848
2 yr avg	588	650	647	648	675	702	697	693	669	481	516	469	403	7,835	588	2,620	2,759	1,869
5 yr proj	512	590	613	653	687	718	820	790	773	607	533	466	453	8,214	512	2,543	3,101	2,059
10 yr proj	500	571	590	624	651	685	797	791	799	647	586	527	498	8,264	500	2,435	3,071	2,258

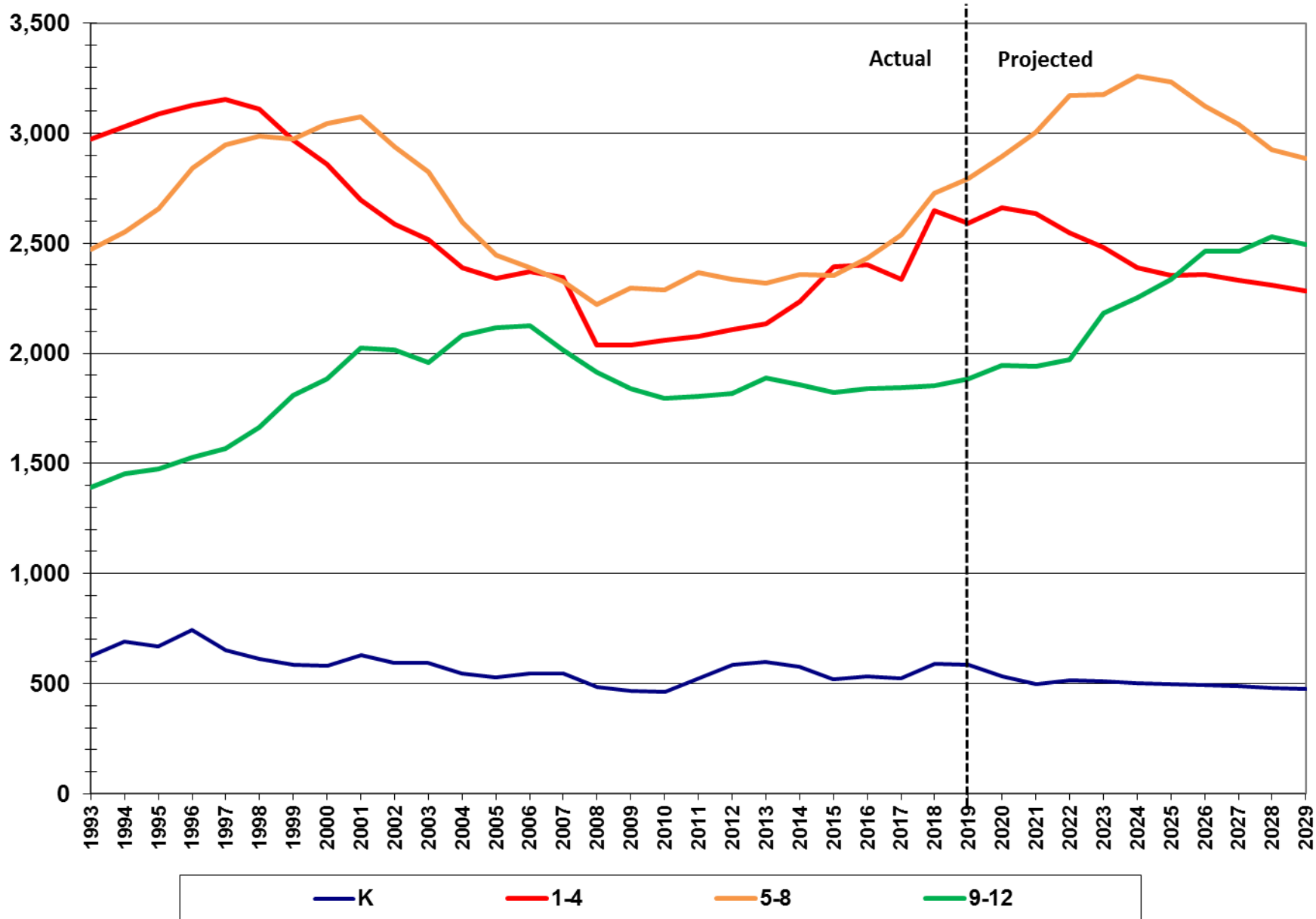
# MSBA Enrollment Projection – Haverhill

## Haverhill Total Enrollment



# MSBA Enrollment Projection – Haverhill

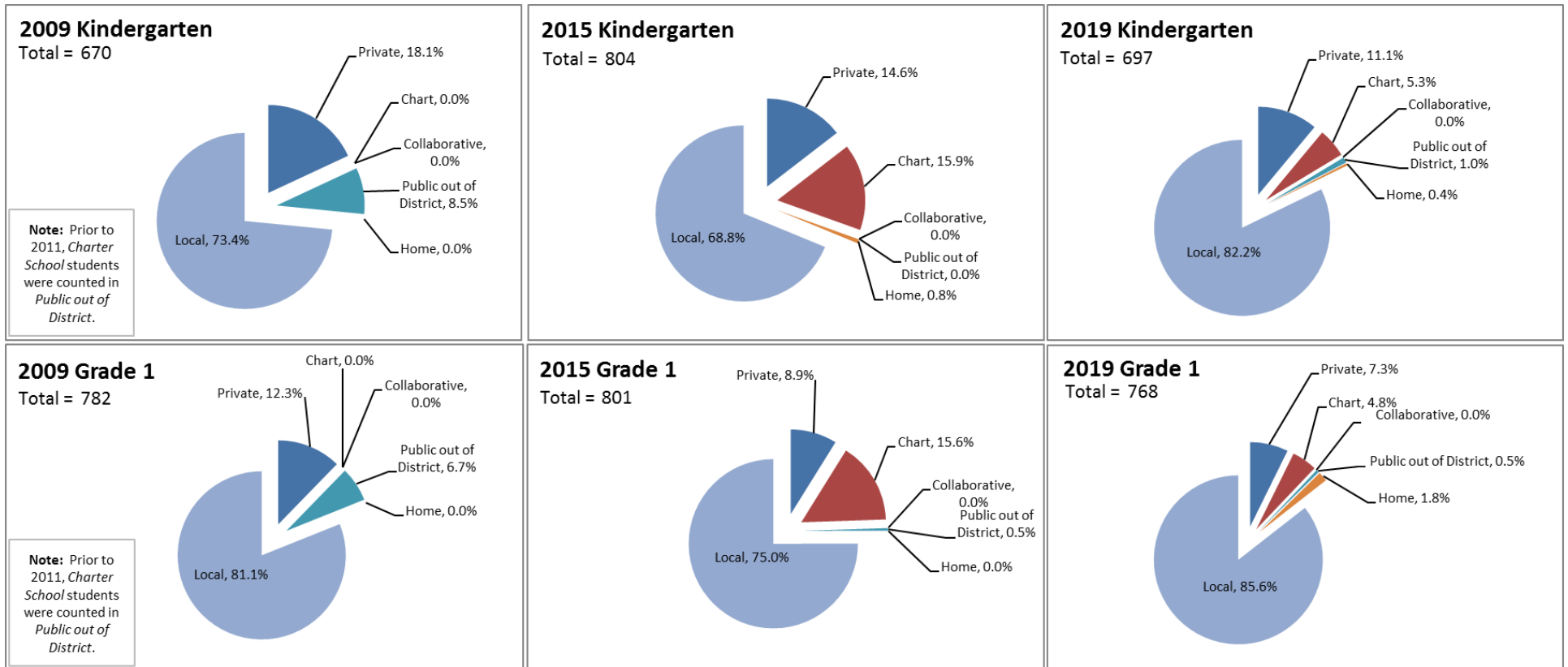
## Haverhill Enrollment by Grade Group





## MSBA Enrollment Projection – Haverhill

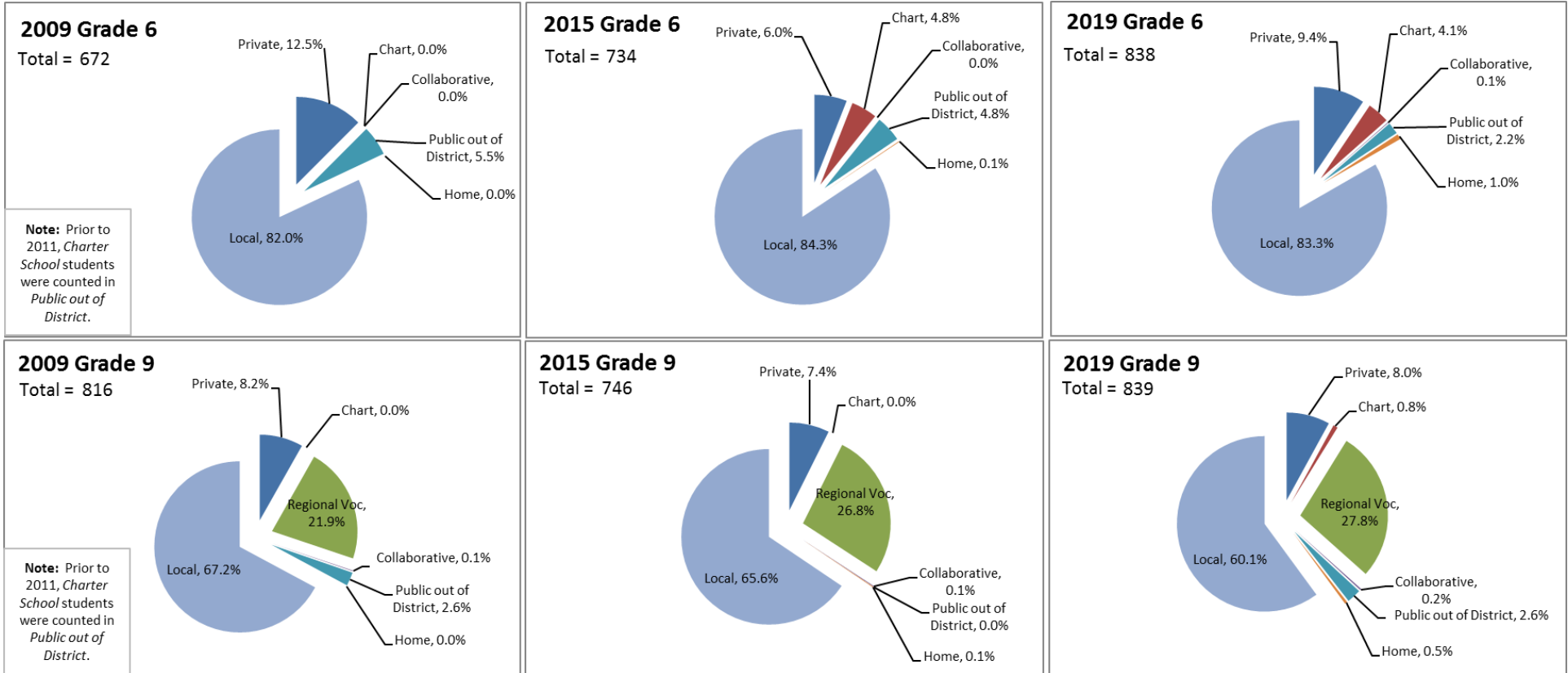
The following charts show the School Attending Children Profiles (indicating where all school-aged children that reside in the district attend school) at the typical transition grades for elementary school, middle school, and high school.



## School Attending Children Profiles Grades K and 1

These profiles show the enrollment of all full-time students whose parents or legal guardians are residents of the city or town.

# MSBA Enrollment Projection – Haverhill



## School Attending Children Profiles

### Grades 6 and 9

These profiles show the enrollment of all full-time students whose parents or legal guardians are residents of the city or town.