

AHERA Three-Year Re-inspection

At the

Whittier Middle School
256 Concord Street
Haverhill, MA 01830

HUB TESTING LABORATORY, INC.

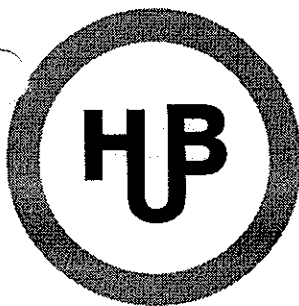
Environmental Testing Service



95 Beaver Street - Waltham, MA 02453
(781) 893-8330 (781) 893-4414 (fax)

HUB TESTING LABORATORY, INC.

Environmental Testing Service



95 Beaver Street - Waltham, MA 02453
(781) 893-8330 (781) 893-4414 (fax)

REPORT FOR: Haverhill Public School District
Central Administration
4 Summer Street
Room 104
Haverhill, MA 01830

ATTENTION: Mr. Tom Geary
Supervisor of Energy & Maintenance

PROJECT: AHERA 3-Year Re-Inspection

SUBJECT: Whittier Middle School
256 Concord Street
Haverhill, MA 01830

PREPARED BY: Hub Testing Laboratory, Inc.

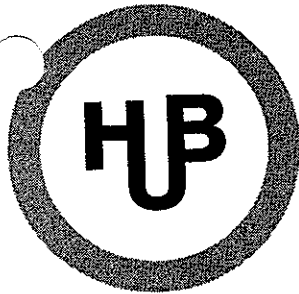
A handwritten signature in black ink, appearing to read 'Susan Boyle', written in a cursive style.

Susan Boyle
Projects Manager
Management Planner
MA License No.: AP060147

DATE: April 2011

HUB TESTING LABORATORY, INC.

Environmental Testing Service



95 Beaver Street - Waltham, MA 02453
(781) 893-8330 (781) 893-4414 (fax)

REPORT FOR: Haverhill Public School District
4 Summer Street
Haverhill, MA 01830

ATTENTION: Mr. Tom Geary
Supervisor of Energy and Maintenance

PROJECT: Whittier Middle School
256 Concord Street
Haverhill, MA 01830

SUBJECT: AHERA Three-Year Re-inspection

DATE: April 2011

As required by the US Environmental Protection Agency's AHERA regulations, Hub Testing Laboratory has completed a survey and reassessment of asbestos containing materials in the Whittier Middle School of the Haverhill Public School District. This report summarizes the locations and condition of materials remaining in the school and reviews the ongoing responsibilities of the Local Education Authority (LEA) pertaining to the building. Lynne Whitcraft (AI 61691) performed the inspection in April of 2011.

When sampling of suspect asbestos-containing materials was required, samples representative of the material were taken. Samples of thermal systems insulation and miscellaneous materials were collected in unobtrusive locations. Samples of surfacing materials were collected using the guidance document method for random sampling.

This latest survey report should be incorporated into the files that the LEA maintains, pertaining to response actions, operations & maintenance activities, six month reinspection, training, air sampling and major asbestos activities.

SUMMARY OF AHERA RE-INSPECTION

The re-inspection consisted of reviewing previous documentation available, interviewing building personnel, and performing a thorough survey of each functional space in the building. The following sections summarize the current re-inspection, the presence of suspect or proven ACM in the building, any damage to the ACM, and response action proposals.

CURRENT FINDINGS

MATERIALS FROM PREVIOUS INSPECTION

During the previous three-year AHERA inspection of the Whittier Middle School in 2000, the following materials were identified as either containing asbestos or assumed to contain asbestos (identified with an asterisk (*)). The list is classified by material. Any change in the condition or presence of the material discovered in the current re-inspection is noted here.

1. Breeching insulation *

Location: Boiler room

Quantity: \approx 244 SF

Condition: Not damaged

2. Header insulation *

Location: Boiler insulation

Quantity: \approx 40 LF

Condition: Not damaged

3. Hot water tank covering

Location: Boiler room

Quantity: \approx 226 LF

Note: Material could not be located during recent inspection. New tank is present.

4. Pipe insulation

Location: Crawlspace, gym, home economics, locker rooms, duct room

Quantity: \approx 6030 LF

Condition: Damaged

5. Roof drain insulation *

Location: Home economics storage, Gym storage A & B, duct room, kitchen , locker room offices, music room, arts storage room

Quantity: \approx 176 SF

Condition: Not damaged

6. Ceiling panels

Location: Girls & Boys locker rooms

Quantity: \approx 108 SF

Condition: Damaged

7. Stage curtain

Location: Cafetorium

Quantity: \approx 600 SF

Condition: Not damaged

8. Window curtain

Location: Cafetorium

Quantity: \approx 60 SF

Condition: Not damaged

9. Floorings & associated mastic *

Location: Throughout school

Note: See the attached Materials Chart and floor plan for specific descriptions and locations of flooring. Until all individual types of tile are sampled and analyzed, suspect floorings and mastic must be assumed to be asbestos containing

10. 12x12 Dotted ceiling tiles *

Location: Home economics, Rooms 1, 2, 3, 4, 5, 6, 7, 8, 9, 10, 11, 12, 13, 14, 15, 16, 17, 18, 19, 20, Girl's wellness

Quantity: ≈ 20, 600 SF

Condition: Damaged

11. 2x4 Thin fissured ceiling tiles w/ lots of dots *

Location: Entry, Hall by cafeteria, Hall by room 1

Quantity: ≈ 4000 SF

Condition: Damaged

12. 2x4 Small fissured ceiling tiles w/ dots *

Location: Patched in Hall by room 1

Condition: Not damaged

NEW MATERIALS SINCE PREVIOUS INSPECTION

The following homogeneous materials were newly identified during the current three-year AHERA inspection. The list is organized by material and all materials are assumed ACM at this time. All homogeneous materials not previously identified must be sampled and identified as ACM or non-ACM prior to any demolition or renovation in the area.

1. Exterior caulking

Location: Windows

Condition: Damaged

2. Exterior glazing

Location: Windows

Condition: Damaged

3. Terrazzo

Location: Bathrooms, Entry to hall by room 1

Condition: Not damaged

4. CMU grout

Location: Throughout

Condition: Not damaged

5. Ceramic tile grout

Location: Kitchen

Condition: Not damaged

6. Speed tile grout

Location: Kitchen, Bathrooms, as cove base in classrooms

Condition: Not damaged

7. Sheetrock ceiling tiles

Location: Kitchen_____

Condition: Damaged

8. Cove base mastic

Location: Teacher's room

Condition: Not damaged

9. Carpet adhesive

Location: Library

Condition: Not damaged

SUSPECT ACM FOUND NOT TO CONTAIN ASBESTOS

The following materials were sampled, analyzed and found not to contain asbestos.

1. Black vibration isolator
2. 2x4 Ceiling tile
3. 1x1 Ceiling tile

ACTION SHEET

Based on the current three-year AHERA Re-inspection of the Whittier Middle School, the following actions for ongoing asbestos management in the school are recommended.

SIX-MONTH SURVEILLANCE

Every six months a periodic surveillance of known and assumed asbestos-containing materials in the school must be conducted and documented. The chart included in this report may be used for the documentation. Use the right hand columns to indicate changes in a material's condition or quantity, and explain the changes in the comment section at the bottom of each page. Fill out the date of the survey and the signature of the person who conducted it at the end of the chart.

TRAINING

In the event that the LEA's Designated Person changes, or new maintenance personnel are hired, the LEA must have Asbestos Awareness Training provided for these individuals.

Staff has some knowledge of asbestos containing materials in their schools however if training has not been reviewed in a number of years this should be conducted again.

RECORDKEEPING

Continue to update files pertaining to:

- a. Training/Licensing of school personnel
- b. Notifications
- c. Response Actions
- d. Re-inspections

LABELING

All friable asbestos containing materials must be maintained with identifying labels. The labels can help to prevent the entry of untrained and unprotected personnel into areas, which may have been contaminated.

**CAUTION
ASBESTOS. HAZARDOUS.
DO NOT DISTURB
WITHOUT PROPER
TRAINING AND EQUIPMENT**

CLEANING

In the case that friable materials become damaged in an occupied space, the materials should be repaired and debris cleaned by qualified trained personnel with proper cleaning equipment and personal protective equipment.

RECOMMENDED RESPONSE ACTIONS

All known and assumed asbestos-containing materials must be monitored for any change in condition. Every precaution and extreme care should be taken to keep these materials in an undamaged condition. In the event that a material is damaged, the appropriate response action should be taken to deal with the situation. Proposed response actions are based on the inspector's visual assessment of ACM according to AHERA assessment categories and risk assessment categories. These categories are detailed on the attached chart. All response actions should be implemented in a timely manner and must be designed by an accredited Asbestos Abatement Designer.

FLOOR TILES

All efforts should be taken to prevent the further cracking and delamination of the asbestos-containing floor tiles in the building. No removal or significant repair is necessary at this time, however funding should be appropriated for future needs. The condition of the floor tiles should be monitored during the six-month surveillances, which is performed as required by a knowledgeable person. This process will aid in documenting when tiles become broken and to determine when and where significantly damaged tiles need to be replaced.

THERMAL SYSTEMS INSULATION (TSI)

Insulation is damaged in the crawlspaces. Access to these areas should be limited. Funding should be appropriated for removal. Care should be taken not to disturb the insulation and fittings.

ASSUMED MATERIALS

The majority of the materials identified during the re-inspection are assumed. Until such time as these materials are sampled and determined to be asbestos containing or not, they must be treated as asbestos containing. All efforts should be taken not to disturb the assumed materials. The inspector did not note issues that require immediate attention. However, funding should start to be appropriated so that sampling can occur as needed. The condition of the materials should be monitored during the six-month surveillances, which is performed as required by a knowledgeable person.

ASSOCIATED COSTS

1. Removal of insulation in crawlspace.
2. Appropriate funding into account for future sampling.
3. As custodial & maintenance personnel have changes, provide awareness training (\$1,800 for all schools)

Approximate funds: \$12,800.00

All work beyond the capabilities of a trained and licensed in house O&M maintenance person must be performed by a licensed and qualified asbestos removal contractor. A licensed Project Designer must design all abatement projects outside of O&M.

3 YEAR RE-INSPECTION

Whittier Middle School

April 2011

ASSUMED AND PROVEN ASBESTOS-CONTAINING MATERIALS

Material & Amount	Location	Type & Friability	Assessment (ND, D, SD), (PD, PSD), (L, M, H)	Type/% Asbestos & # of Samples	Comment	Six Month Surveillances & Re-inspections					3-YR
						6-mo.	12-mo.	18-mo.	24-mo.	30-mo.	
Breaching insulation ≈ 244 SF	Boiler room	TSI, F	ND, PD, L		This material is a presumed material.						C
Header insulation ≈ 40 LF	Boiler room	TSI, F	ND, PD, L		This material is a presumed material.						C
Hot water tank covering ≈ 226 SF	Boiler room	TSI, F	ND, PD, L	* WH 09, 30	Material may have been removed as a new tank is present.						C
Pipe insulation ≈ 6030 LF	Crawlspace, gym, home economics, locker rooms, duct room	TSI, F	D, PD, M	* WH 06, 13, 14, 16, 34	Approximately 2500 SF of insulation has been removed from a crawlspace.						C
Roof drain insulation ≈ 176 LF	Home economics storage, Gym storage A & B, duct room, kitchen, locker room offices, music room, arts storage room	TSI, F	ND, PD, L		This material is a presumed material.						C
Vibration isolator (White) ≈ 14 SF	Boiler room	M, NF	ND, PD, L		This material is a presumed material.						C
Ceiling panels ≈ 108 SF	Girls/Boys Locker rooms and Kitchen	M, NF	D, PD, L	* WH 12 Hub ID 13246-9-1 13246-9-2	Damaged in boy's locker room						C

Comments: * Indicates previously sampled material from original inspection.

Key
Amount
 SF - square feet
 LF - linear feet

Friability
 F - friable
 NF - not friable

Assessment
 L - low access.
 M - medium access.
 H - high accessibility

Assessment
 ND - not damaged
 D - damage
 SD - significantly damaged
 PD - potential for damage
 PSD - potential for significant damage

Six Month Surveillance & Re-inspections

Fill in the corresponding box with a ✓ for no change in condition or a C for a change in the status of a material. Write details about changes in the comment area below the chart on the same page. The person conducting the surveillance must sign and date below.

6-mo. Date:	18-mo. Date:	Signature:	Signature:
12-mo. Date:	24-mo. Date:	Signature:	Signature:
30-mo. Date:	3-YR Re-inspect: 4/2011	Signature: <i>Dynne Wunz</i>	Signature:

3 YEAR RE-INSPECTION

Whittier Middle School

April 2011

ASSUMED AND PROVEN ASBESTOS-CONTAINING MATERIALS

Material & Amount	Location	Type & Friability	Assessment (ND, D, SD), (PD, PSD), (L, M, H)	Type/% Asbestos & # of Samples	Comment	Six Month Surveillances & Re-inspections					3-YR	
						6-mo.	12-mo.	18-mo.	24-mo.	30-mo.		
Stage curtain ≈ 600 SF	Cafetorium	M, NF	ND, PD, L	* WH 33	This material is a presumed material. Two more samples should be collected to prove material is non-asbestos.							C
Window curtain ≈ 60 SF	Cafetorium	M, NF	ND, PD, L	* WH 32	This material is a presumed material. Two more samples should be collected to prove material is non-asbestos.							C
9x9 Light gray floor tile w/ gray, white & pink streaks ≈ 5000 SF	Home economics, Cafetorium	M, NF	D, PD, M	* WH 11								C
9x9 Dark gray floor tile w/ black streaks ≈ 543 SF	Home economics patch, Teacher's room	M, NF	D, PD, M	* WH 17								C
9x9 Black floor tile ≈ 100 SF	Patches in Office	M, NF	ND, PD, M		This material is a presumed material.							C

Comments: * Indicates previously sampled material from original inspection.

Key
Amount
 SF – square feet
 LF – linear feet
Assessment
 ND – not damaged
 D – damage
 SD – significantly damaged
 PD – potential for damage
 PSD – potential for significant damage
Friability
 F – friable
 NF – not friable
Type
 T – TSI
 S – surfacing
 M – misc.
 H – high accessibility

Six Month Surveillances & Re-inspections
 Fill in the corresponding box with a ✓ for no change in condition or a C for a change in the status of a material. Write details about changes in the comment area below the chart on the same page. The person conducting the surveillance must sign and date below.

6-mo. Date:	18-mo. Date:	Signature:
12-mo. Date:	24-mo. Date:	Signature:
30-mo. Date:	3-YR Re-inspect: 4/2011	Signature: <i>Dymme Wimpfe</i>

3 YEAR RE-INSPECTION

Whittier Middle School

April 2011

ASSUMED AND PROVEN ASBESTOS-CONTAINING MATERIALS

Material & Amount	Location	Type & Friability	Assessment (ND, D, SD), (PD, PSD), (L, M, H)	Type/% Asbestos & # of Samples	Comment	Six Month Surveillances & Re-inspections				3-YR	
						6-mo.	12-mo.	18-mo.	24-mo.		30-mo.
9x9 Tan floor tile w/black & white streaks ≈ 4100 SF	Rooms 1, 2, 3, 5, 1/2 Computer room	M, NF	D, PD, M	* WH 25							C
Mastic associated with 9x9 floor tiles	Under 9x9 floor tile	M, NF	ND, PD, L		This material is a presumed material. However three samples from a 9x9 tan floor tile were tested (Hub ID 13327-1B, 2B, 3B) and found to be non-asbestos.						C
12x12 Pea green floor tile w/ gray & white flecks ≈ 4300 SF	Entry, Hall by cafeteria, hall by room 1, Office	M, NF	D, PD, L	* WH 05	This material is a presumed material. Two more samples should be collected to prove material is non-asbestos.						C
12x12 Brown w/ dark brown flecks 40 SF	Storage in home economics	M, NF	D, PD, L		This material is a presumed material.						C
12x12 Blue floor tile w/ dark blue flecks 800SF	Teacher's room	M, NF	ND, PD, L		This material is a presumed material.						C

Comments: * Indicates previously sampled material from original inspection.

- Key**
- Amount**
 SF – square feet
 LF – linear feet
- Friability**
 F – friable
 NF – not friable
- Assessment**
 L – low access.
 M – medium access.
 H – high accessibility
- Assessment**
 ND – not damaged
 D – damage
 SD – significantly damaged
 PD – potential for damage
 PSD – potential for significant damage

Six Month Surveillance & Re-inspections

Fill in the corresponding box with a ✓ for no change in condition or a C for a change in the status of a material. Write details about changes in the comment area below the chart on the same page. The person conducting the surveillance must sign and date below.

6-mo. Date:	18-mo. Date:	Signature:
12-mo. Date:	24-mo. Date:	Signature:
30-mo. Date:	3-YR Re-inspect: 4/2011	Signature: <i>Lyme W...</i>

3 YEAR RE-INSPECTION

Whittier Middle School

April 2011

ASSUMED AND PROVEN ASBESTOS-CONTAINING MATERIALS

Material & Amount	Location	Type & Friability	Assessment (ND, D, SD), (PD, PSD), (L, M, H)	Type/% Asbestos & # of Samples	Comment	Six Month Surveillances & Re-inspections					
						6-mo.	12-mo.	18-mo.	24-mo.	30-mo.	3-YR
12x12 Light blue floor tile w/ dark blue & white flecks ≈ 5600 SF	Room 9, 10, 8, 7, 6, 4	M, NF	D, PD, L		This material is a presumed material.						C
12x12 Tan splochy floor tile ≈ 8700 SF	Music room, 1/2 Computer room, 11, 12, 13, 14, 15, 16, 19, 20	M, NF	D, PD, L	* WH 07	This material is a presumed material. Two more samples should be collected to prove material is non-asbestos.						C
12x12 White floor tile w/ gray mottled ≈ 1800 SF	Rooms 17 & 18	M, NF	D, PD, L		This material is a presumed material.						C
Mastic associated with 12x12 floor tiles	Under 12x12 floor tile	M, NF	ND, PD, L		This material is a presumed material.						C
12x12 Dotted ceiling tile ≈ 20, 600 SF	Home economics, Rooms 1, 2, 3, 4, 5, 6, 7, 8, 9, 10, 11, 12, 13, 14, 15, 16, 17, 18, 19, 20, Girl's wellness	M, F	D, PD, L		Water damage noted in majority of rooms						C

Comments: * Indicates previously sampled material from original inspection.

- Key**
- Amount**
 SF - square feet
 LF - linear feet
- Friability**
 F - friable
 NF - not friable
- Assessment**
 ND - not damaged
 D - damage
 SD - significantly damaged
 PD - potential for damage
 PSD - potential for significant damage
- Type**
 T - TSI
 S - surfacing
 M - misc.
- Assessment**
 L - low access.
 M - medium access.
 H - high accessibility

Six Month Surveillance & Re-inspections
 Fill in the corresponding box with a ✓ for no change in condition or a C for a change in the status of a material. Write details about changes in the comment area below the chart on the same page. The person conducting the surveillance must sign and date below.

6-mo. Date:		18-mo. Date:		Signature:	
12-mo. Date:		24-mo. Date:		Signature:	
30-mo. Date:		3-YR Re-inspect:	u/zeu	Signature:	<i>Lynne Wump</i>

3 YEAR RE-INSPECTION

Whittier Middle School

April 2011

ASSUMED AND PROVEN ASBESTOS-CONTAINING MATERIALS

Material & Amount	Location	Type & Friability	Assessment (ND, D, SD), (PD, PSD), (L, M, H)	Type/% Asbestos & # of Samples	Comment	Six Month Surveillances & Re-inspections					
						6-mo.	12-mo.	18-mo.	24-mo.	30-mo.	3-YR
2x4 Thin fissured ceiling tile w/ lots of dots ≈ 4000 SF	Entry, Hall by cafeteria, Hall by room 1	M, F	D, PD, L								C
2x4 Small fissured ceiling tile w/ dots	Patched in at Hall by room 1	M, F	ND, PD, L								C
Exterior caulking	Windows	M, NF	D, PD, M		New material identified.						C
Exterior glazing	Windows	M, NF	D, PD, M		New material identified.						C
Terrazzo	Bathrooms, Entry to hall by room 1	M, NF	ND, PD, L		New material identified.						C
CMU grout	Throughout	M, NF	ND, PD, L		New material identified.						C
Ceramic tile grout	Kitchen	M, NF	ND, PD, L		New material identified.						C
Speed tile grout	Kitchen, Bathrooms, as cove base in classrooms	M, NF	ND, PD, L		New material identified.						C
Sheetrock ceiling tiles	Kitchen	M, NF	D, PD, L		New material identified.						C

Comments: * Indicates previously sampled material from original inspection.

- Key**
- Amount**
 SF - square feet
 LF - linear feet
- Friability**
 F - friable
 NF - not friable
- Assessment**
 ND - not damaged
 D - damage
 SD - significantly damaged
 PD - potential for damage
 PSD - potential for
 L - low access.
 M - medium access.
 H - high accessibility

Six Month Surveillance & Re-inspections

Fill in the corresponding box with a V for no change in condition or a C for a change in the status of a material. Write details about changes in the comment area below the chart on the same page. The person conducting the surveillance must sign and date below.

6-mo. Date:	Signature:	18-mo. Date:	Signature:
12-mo. Date:	Signature:	24-mo. Date:	Signature:
30-mo. Date:	Signature:	3-YR Re-inspect: Date: 4/20/11	Signature: <i>Dynne V...</i>

3 YEAR RE-INSPECTION

Whittier Middle School

April 2011

ASSUMED AND PROVEN ASBESTOS-CONTAINING MATERIALS										
Material & Amount	Location	Type & Friability	Assessment (ND, D, SD), (PD, PSD), (L, M, H)	Type/% Asbestos & # of Samples	Comment	Six Month Surveillances & Re-inspections				
						6-mo.	12-mo.	18-mo.	24-mo.	30-mo.
Cove base mastic	Teacher's room (blue)				New material identified.					
Carpet adhesive 1344 SF	Library									
MATERIALS THAT HAVE BEEN ABATED/REMOVED OR PROVEN TO NOT CONTAIN ASBESTOS										
Material	Location	Samples								Comment
Black vibration isolator (~ 45 SF)	Rms. 43, 58, 68, 107, 108, Gym	Hub ID: 13376-4, 13776-5, 13376-6								Previously sampled and found not to be asbestos containing
2x4 Ceiling tile (~ 1200 SF)	East Wing Hallway	WH 02 Hub ID: 13246-9-3, 13246-9-4								Previously sampled and found not to be asbestos containing
1x1 Ceiling tile (~ 1200 SF)	Administration wing hallway	WH 10 Hub ID: 13246-9-5, 13246-9-6								Previously sampled and found not to be asbestos containing
Boiler Jacket (~ 680 SF)	Boiler room									Removed in 3/2001
Pipe insulation	Crawlspace									2500 SF was removed in 10/08
9x9 Floor tile	Office adjacent to the stage and cafeteria									800 SF removed in 10/08
9x9 Floor tile	Classrooms 4, 6, 8 and 10									3,600 square feet removed in 8/06

Comments: * Indicates previously sampled material from original inspection.

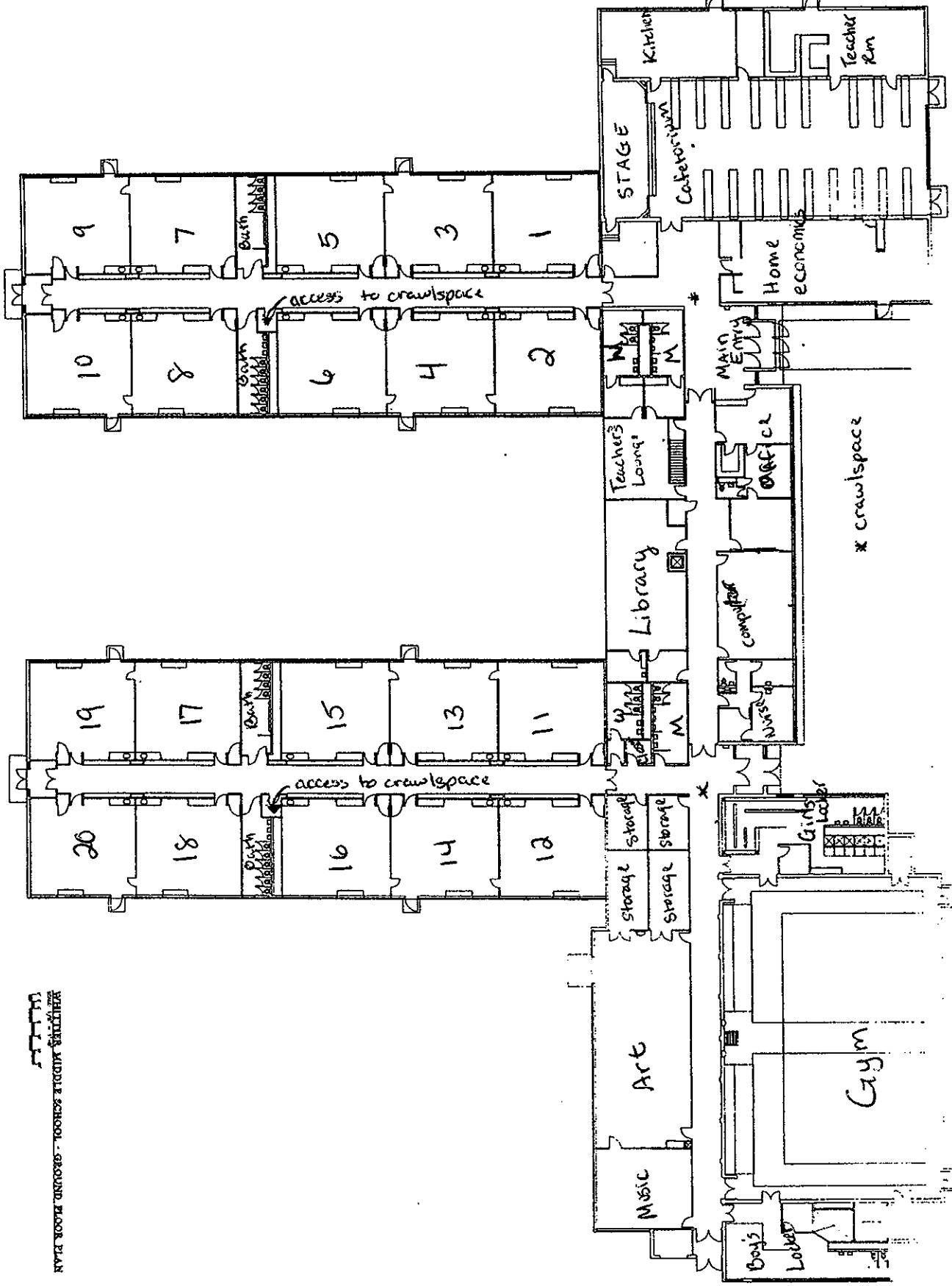
Key	Friability	Assessment
SF - square feet	F - friable	ND - not damaged
LF - linear feet	NF - not friable	D - damage
		SD - significantly damaged
Type	Assessment	PD - potential for damage
T - TSI	L - low access.	PSD - potential for
S - surfacing	M - medium access.	S - Significant damage
M - misc.	H - high accessibility	

Six Month Surveillance & Re-inspections
 Fill in the corresponding box with a ✓ for no change in condition or a C for a change in the status of a material. Write details about changes in the comment area below the chart on the same page. The person conducting the surveillance must sign and date below.

6-mo. Date: _____ Signature: _____
 12-mo. Date: _____ Signature: _____
 30-mo. Date: _____ Signature: _____

18-mo. Date: _____ Signature: _____
 24-mo. Date: _____ Signature: _____
 3-YR Re-inspect: Date: 4/20/11 Signature: *Dynno Whittier*

WHITTIER MIDDLE SCHOOL - GROUND FLOOR PLAN



A1.01
 EXISTING GROUND FLOOR PLAN

DATE: 10/15/01
 DRAWN BY: [illegible]
 CHECKED BY: [illegible]
 DATE: 10/15/01

WHITTIER MIDDLE SCHOOL
 256 CONCORD STREET • HAVERHILL, MASS.

ARCADD, INC.
 ARCHITECTURAL PLANNING
 100 STATE STREET
 HAVERHILL, MASSACHUSETTS 01830
 OFFICE (978) 835-1100
 FAX (978) 835-1100