

| | |
|-----------------------|--|
| District Name: | Haverhill Public Schools |
| School Name: | Pentucket Lake Elementary School |
| Address: | 252 Concord St. Haverhill, MA 01830 |

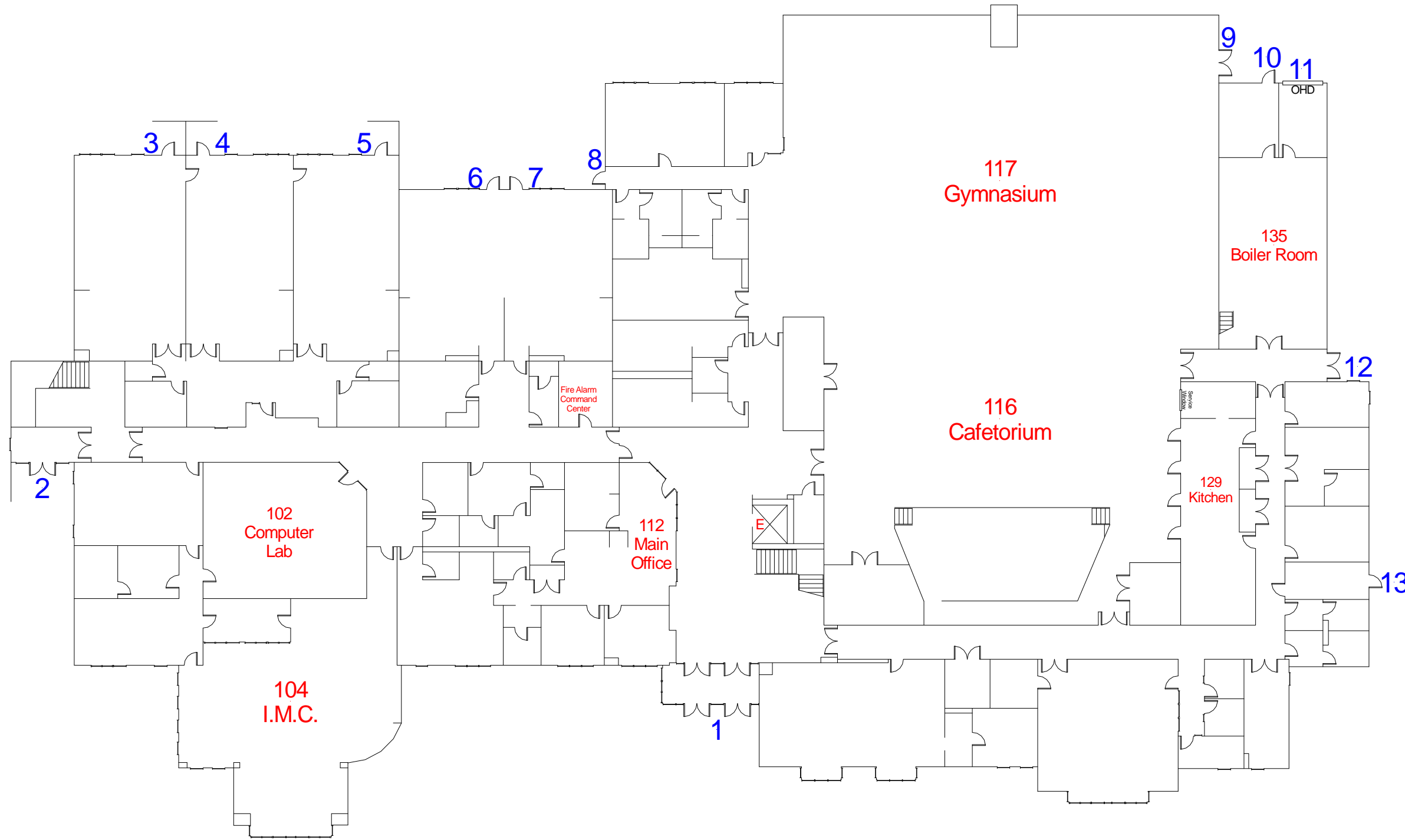
Side C

For Official Use Only

Footprint

Side B

Side D



Footprint

Legend

- Camera
- Chair Lift
- Bathrooms: Mens, Womens, Unisex
- Storage
- Window
- Elevator
- Emergency Phone
- Knox Box
- Water Shutoff
- Sprinkler Shutoff
- Electrical Shutoff
- Gas Shutoff
- Ramp
- Emergency Generator
- Fire Alarm Control Panel
- Halon System
- Fire Dept. Connection
- Fire Extinguisher

Side A

| | |
|-----------------------|--|
| District Name: | Haverhill Public Schools |
| School Name: | Pentucket Lake Elementary School |
| Address: | 252 Concord St. Haverhill, MA 01830 |

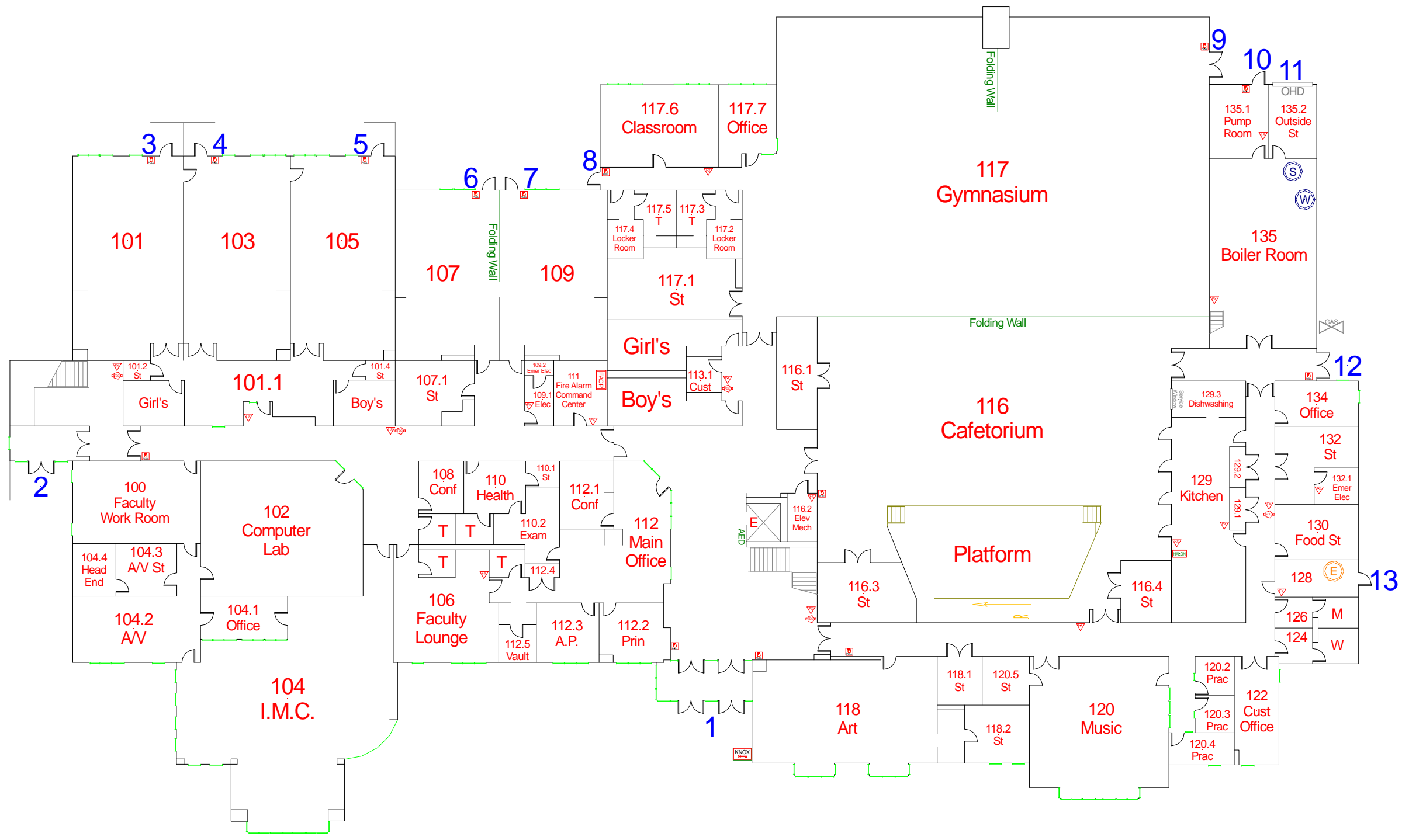
Side C

For Official Use Only

First Floor

Side B

Side D



Legend

- Camera
- Chair Lift
- Bathrooms: Mens, Womens, Unisex
- Storage
- Window
- Elevator
- Emergency Phone
- Knox Box
- Water Shutoff
- Sprinkler Shutoff
- Electrical Shutoff
- Gas Shutoff
- Ramp
- Emergency Generator
- Fire Alarm Control Panel
- Halon System
- Fire Dept. Connection
- Fire Extinguisher

First Floor

Side A



| | |
|-----------------------|--|
| District Name: | Haverhill Public Schools |
| School Name: | Pentucket Lake Elementary School |
| Address: | 252 Concord St. Haverhill, MA 01830 |

Side C

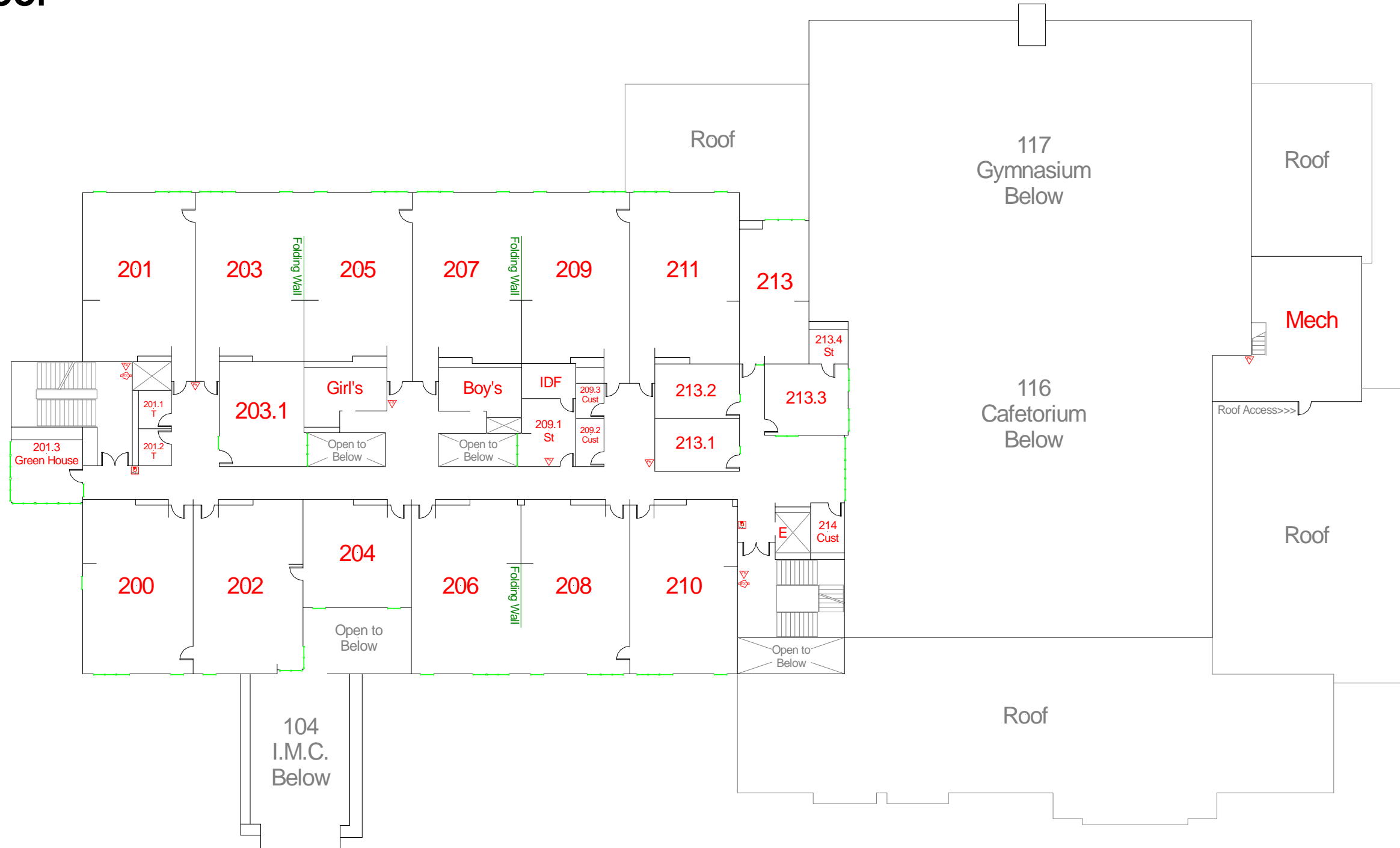
For Official Use Only

Second Floor

Second Floor

Side B

Side D



Legend

- Camera
- Chair Lift
- Bathrooms: Mens, Womens, Unisex
- Storage
- Window
- Elevator
- Emergency Phone
- Knox Box
- Water Shutoff
- Sprinkler Shutoff
- Electrical Shutoff
- Gas Shutoff
- Ramp
- Emergency Generator
- Fire Alarm Control Panel
- Halon System
- Fire Dept. Connection
- Fire Extinguisher

Side A



| | |
|-----------------------|--|
| District Name: | Haverhill Public Schools |
| School Name: | Pentucket Lake Elementary School |
| Address: | 252 Concord St. Haverhill, MA 01830 |

Side C

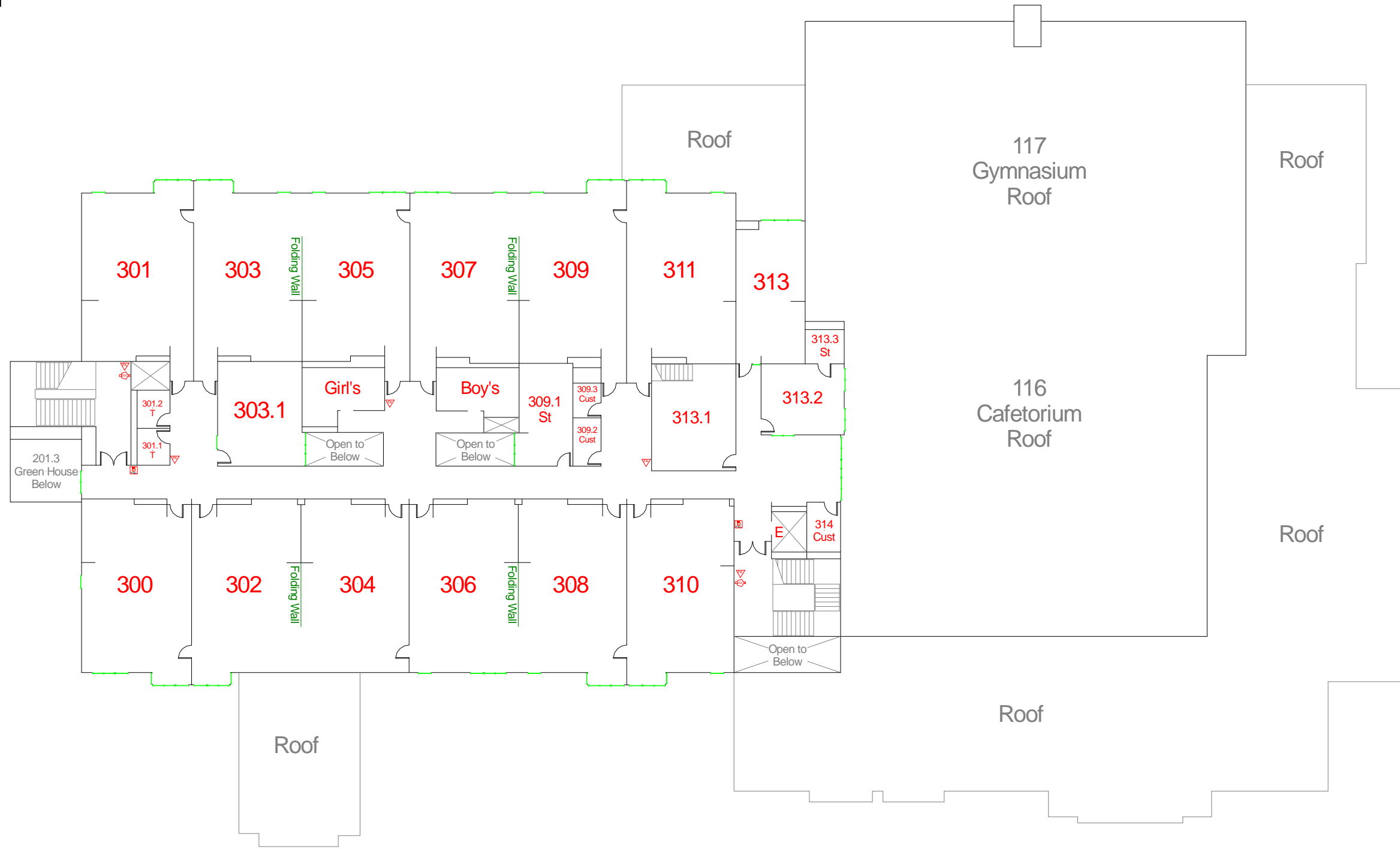
For Official Use Only

Third Floor

Third Floor

Side B

Side D



Legend

- Camera
- Chair Lift
- Bathrooms: Mens, Womens, Unisex
- Storage
- Window
- Elevator
- Emergency Phone
- Knox Box
- Water Shutoff
- Sprinkler Shutoff
- Electrical Shutoff
- Gas Shutoff
- Ramp
- Emergency Generator
- Fire Alarm Control Panel
- Halon System
- Fire Dept. Connection
- Fire Extinguisher

Side A

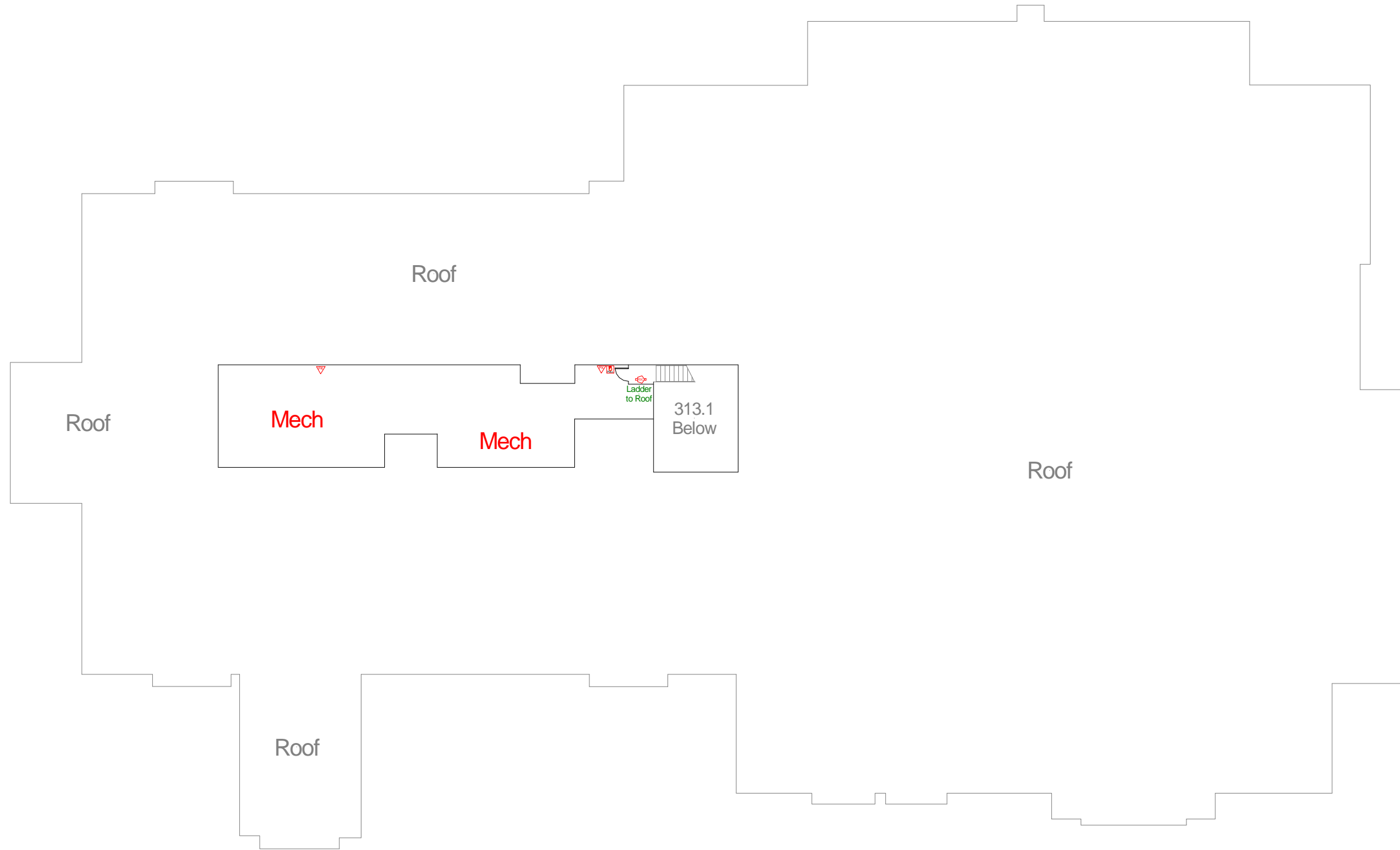


| | |
|-----------------------|--|
| District Name: | Haverhill Public Schools |
| School Name: | Pentucket Lake Elementary School |
| Address: | 252 Concord St. Haverhill, MA 01830 |

Side C

For Official Use Only

Attic



Attic

Side B

Side D

Side A

Legend

- Camera
- Chair Lift
- Bathrooms: Mens, Womens, Unisex
- Storage
- Window
- Elevator
- Emergency Phone
- Knox Box
- Water Shutoff
- Sprinkler Shutoff
- Electrical Shutoff
- Gas Shutoff
- Ramp
- Emergency Generator
- Fire Alarm Control Panel
- Halon System
- Fire Dept. Connection
- Fire Extinguisher