

District Name:	Haverhill Public Schools
School Name:	Nettle Middle School
Address:	150 Boardman Street Haverhill, MA 01830

Footprint

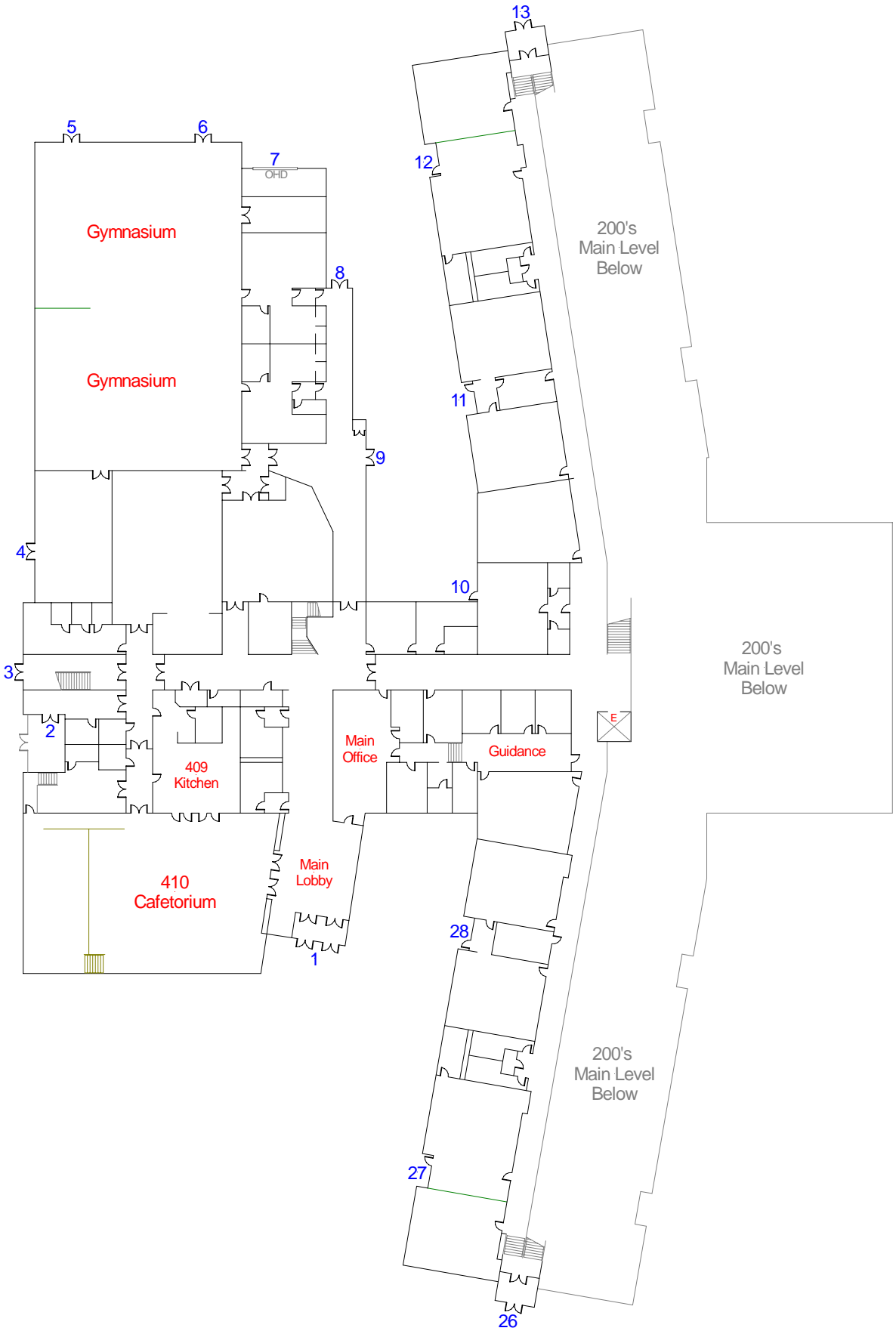
Side B

Legend

- Camera
- Chair Lift
- Bathrooms: Mens, Womens, Unisex
- Storage
- Window
- Elevator
- Emergency Phone
- Knox Box
- Water Shutoff
- Sprinkler Shutoff
- Electrical Shutoff
- Gas Shutoff
- Ramp
- Emergency Generator
- Fire Alarm Control Panel
- Halon System
- Fire Dept. Connection
- Fire Extinguisher



Side C



Side A

For Official Use Only

Side D

Footprint

District Name:	Haverhill Public Schools
School Name:	Nettle Middle School
Address:	150 Boardman Street Haverhill, MA 01830

200's Main Level Floor Plan

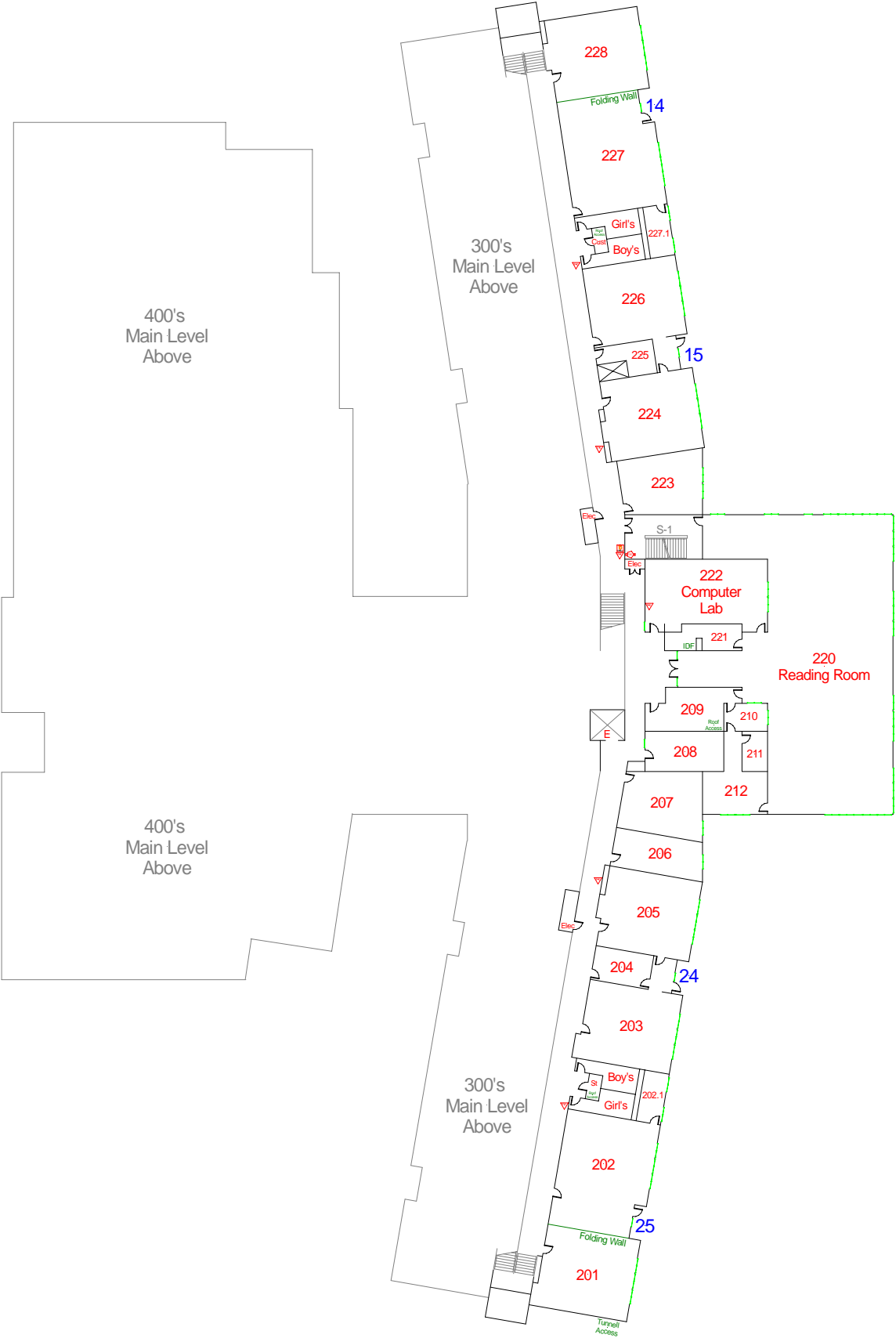
Side B

Legend

- Camera
- Chair Lift
- Bathrooms: Mens, Womens, Unisex
- Storage
- Window
- Elevator
- Emergency Phone
- Knox Box
- Water Shutoff
- Sprinkler Shutoff
- Electrical Shutoff
- Gas Shutoff
- Ramp
- Emergency Generator
- Fire Alarm Control Panel
- Halon System
- Fire Dept. Connection
- Fire Extinguisher



Side C



Side A

For Official Use Only

Side D

200's Main Level Floor Plan

District Name:	Haverhill Public Schools
School Name:	Nettle Middle School
Address:	150 Boardman Street Haverhill, MA 01830

Main Level Floor Plan

Side B

Legend

- Camera
- Chair Lift
- Bathrooms: Mens, Womens, Unisex
- Storage
- Window
- Elevator
- Emergency Phone
- Knox Box
- Water Shutoff
- Sprinkler Shutoff
- Electrical Shutoff
- Gas Shutoff
- Ramp
- Emergency Generator
- Fire Alarm Control Panel
- Halon System
- Fire Dept. Connection
- Fire Extinguisher



Side C

Side D

Main Level Floor Plan

Side A

For Official Use Only

District Name:	Haverhill Public Schools
School Name:	Nettle Middle School
Address:	150 Boardman Street Haverhill, MA 01830

Upper Level Floor Plan

Side B

Side C

For Official Use Only

Side D

Legend

- Camera
- Chair Lift
- Bathrooms: Mens, Womens, Unisex
- Storage
- Window
- Elevator
- Emergency Phone
- Knox Box
- Water Shutoff
- Sprinkler Shutoff
- Electrical Shutoff
- Gas Shutoff
- Ramp
- Emergency Generator
- Fire Alarm Control Panel
- Halon System
- Fire Dept. Connection
- Fire Extinguisher



Upper Level Floor Plan



District Name:	Haverhill Public Schools
School Name:	Nettle Middle School
Address:	150 Boardman Street Haverhill, MA 01830

Lower Level Floor Plan

Side B

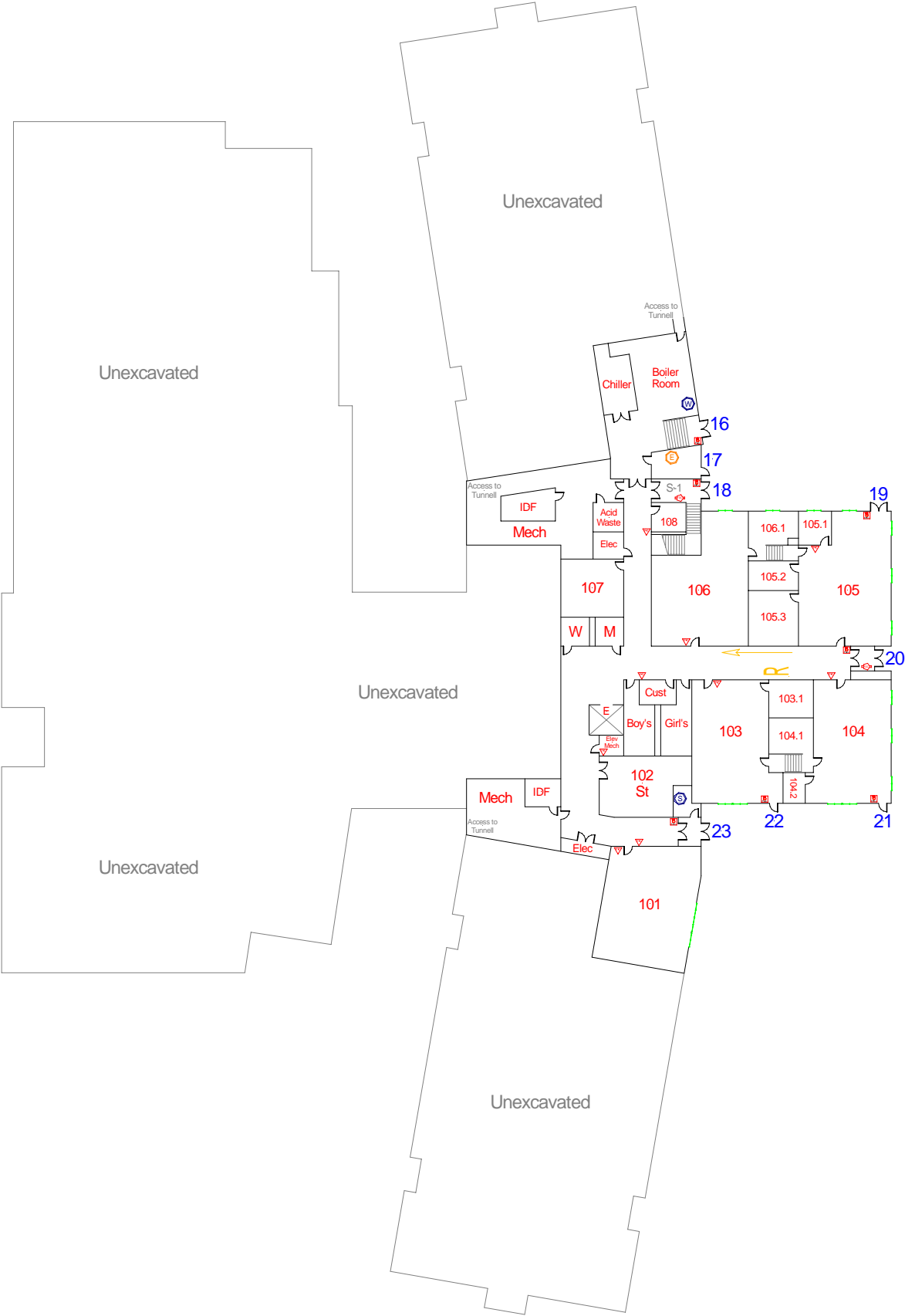
Side C

For Official Use Only

Side D

Legend

- Camera
- Chair Lift
- Bathrooms: Mens, Womens, Unisex
- Storage
- Window
- Elevator
- Emergency Phone
- Knox Box
- Water Shutoff
- Sprinkler Shutoff
- Electrical Shutoff
- Gas Shutoff
- Ramp
- Emergency Generator
- Fire Alarm Control Panel
- Halon System
- Fire Dept. Connection
- Fire Extinguisher



Lower Level Floor Plan